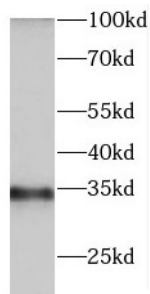


Deoxyribonuclease Gamma (DNASE1L3) Antibody

Catalogue No.: abx232476



WB analysis of HEK-293 cells, using DNASE1L3 antibody (1/1000 dilution).

DNASE1L3 Antibody is a Rabbit Polyclonal against DNASE1L3.

Target:	Deoxyribonuclease Gamma (DNASE1L3)
Clonality:	Polyclonal
Reactivity:	Human, Mouse, Rat
Tested Applications:	ELISA, WB
Host:	Rabbit
Recommended dilutions:	WB: 1/500 - 1/2000. Optimal dilutions/concentrations should be determined by the end user.
Conjugation:	Unconjugated
Immunogen:	deoxyribonuclease I-like 3
Isotype:	IgG
Form:	Liquid
Purity:	≥ 95% (SDS-PAGE)
Purification:	Purified by immunogen affinity chromatography.
Storage:	Aliquot and store at -20°C. Avoid repeated freeze/thaw cycles.
Validity:	12 months.
UniProt Primary AC:	Q13609 (UniProt , ExPASy)

Datasheet

Version: 1.0.0
Revision date: 24 Nov 2024

Gene Symbol:	DNASE1L3
GeneID:	1776
OMIM:	602244
HGNC:	2959
KEGG:	hsa:1776
Ensembl:	ENSG00000163687
String:	9606.ENSP00000378053
Molecular Weight:	Observed MW: 33 kDa
Buffer:	PBS, pH 7.3, with 0.02% sodium azide and 50% glycerol.
Concentration:	2 mg/ml
Note:	This product is for research use only.

For Reference Only