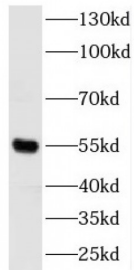
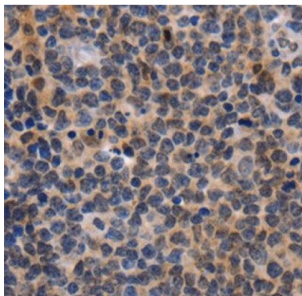


Docking Protein 3 (DOK3) Antibody

Catalogue No.: abx232502



WB analysis of Jurkat cells, using DOK3 antibody (1/800 dilution).



IHC-P analysis of human lymphoma tissue, using DOK3 antibody (1/50 dilution).

DOK3 Antibody is a Rabbit Polyclonal against DOK3.

Target:	Docking Protein 3 (DOK3)
Clonality:	Polyclonal
Reactivity:	Human, Mouse, Rat
Tested Applications:	ELISA, WB, IHC
Host:	Rabbit
Recommended dilutions:	WB: 1/500 - 1/2000, IHC: 1/20 - 1/200. Optimal dilutions/concentrations should be determined by the end user.
Conjugation:	Unconjugated
Immunogen:	docking protein 3
Isotype:	IgG
Form:	Liquid
Purity:	≥ 95% (SDS-PAGE)

Datasheet

Version: 2.0.0
Revision date: 05 Dec 2023



Purification:	Purified by immunogen affinity chromatography.
Storage:	Aliquot and store at -20°C. Avoid repeated freeze/thaw cycles.
Validity:	12 months.
UniProt Primary AC:	Q7L591 (UniProt , ExPASy)
Gene Symbol:	DOK3
GeneID:	79930
OMIM:	611435
HGNC:	24583
KEGG:	hsa:79930
Ensembl:	ENSG00000146094
String:	9606.ENSP00000349727
Molecular Weight:	Observed MW: 53 kDa
Buffer:	PBS, pH 7.3, with 0.02% sodium azide and 50% glycerol.
Concentration:	2 mg/ml
Note:	This product is for research use only.

For Reference Only