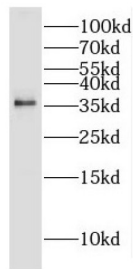


Docking Protein 5 (DOK5) Antibody

Catalogue No.: abx232504



WB analysis of mouse liver tissue, using DOK5 antibody (1/300 dilution).

DOK5 Antibody is a Rabbit Polyclonal against DOK5.

Target: Docking Protein 5 (DOK5)**Clonality:** Polyclonal**Reactivity:** Human, Mouse, Rat**Tested Applications:** ELISA, WB**Host:** Rabbit**Recommended dilutions:** WB: 1/500 - 1/2000. Optimal dilutions/concentrations should be determined by the end user.**Conjugation:** Unconjugated**Immunogen:** docking protein 5**Isotype:** IgG**Form:** Liquid**Purity:** ≥ 95% (SDS-PAGE)**Purification:** Purified by immunogen affinity chromatography.**Storage:** Aliquot and store at -20°C. Avoid repeated freeze/thaw cycles.**Validity:** 12 months.**UniProt Primary AC:** Q9P104 ([UniProt](#), [ExPASy](#))

Datasheet

Version: 3.0.0
Revision date: 13 Mar 2025



Gene Symbol:	DOK5
GeneID:	55816
OMIM:	608334
HGNC:	16173
Ensembl:	ENSG00000101134
String:	9606.ENSP00000262593
Molecular Weight:	Observed MW: 35 kDa
Buffer:	PBS, pH 7.3, with 0.02% sodium azide and 50% glycerol.
Concentration:	2 mg/ml
Note:	THIS PRODUCT IS FOR RESEARCH USE ONLY. NOT FOR USE IN DIAGNOSTIC, THERAPEUTIC OR COSMETIC PROCEDURES. NOT FOR HUMAN OR ANIMAL CONSUMPTION.

For Reference Only