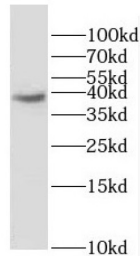


## Docking Protein 6 (DOK6) Antibody

Catalogue No.: abx232505



WB analysis of mouse brain tissue, using DOK6 antibody (1/600 dilution).

DOK6 Antibody is a Rabbit Polyclonal against DOK6.

**Target:** Docking Protein 6 (DOK6)**Clonality:** Polyclonal**Reactivity:** Human, Mouse, Rat**Tested Applications:** ELISA, WB**Host:** Rabbit**Recommended dilutions:** WB: 1/500 - 1/2000. Optimal dilutions/concentrations should be determined by the end user.**Conjugation:** Unconjugated**Immunogen:** docking protein 6**Isotype:** IgG**Form:** Liquid**Purity:** ≥ 95% (SDS-PAGE)**Purification:** Purified by immunogen affinity chromatography.**Storage:** Aliquot and store at -20°C. Avoid repeated freeze/thaw cycles.**Validity:** 12 months.**UniProt Primary AC:** Q6PKX4 ([UniProt](#), [ExPASy](#))

# Datasheet

Version: 2.0.0  
Revision date: 06 Oct 2024



<b>Gene Symbol:</b>	DOK6
<b>GeneID:</b>	<a href="#">220164</a>
<b>OMIM:</b>	<a href="#">611402</a>
<b>HGNC:</b>	28301
<b>KEGG:</b>	hsa:220164
<b>Ensembl:</b>	ENSG00000206052
<b>String:</b>	<a href="#">9606.ENSP00000372160</a>
<b>Molecular Weight:</b>	Observed MW: 38 kDa
<b>Buffer:</b>	PBS, pH 7.3, with 0.02% sodium azide and 50% glycerol.
<b>Concentration:</b>	2 mg/ml
<b>Note:</b>	This product is for research use only.

For Reference Only