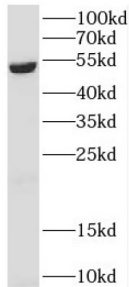
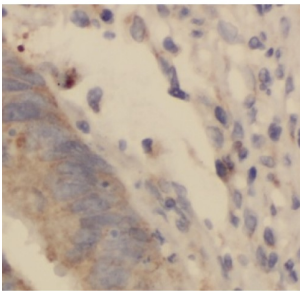


## Diphthamide Biosynthesis Protein 2 (DPH2) Antibody

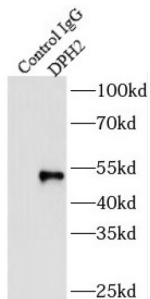
Catalogue No.: abx232516



WB analysis of human brain tissue, using DPH2 antibody (1/400 dilution).



IHC-P analysis of human colon cancer tissue, using DPH2 antibody (1/50 dilution).



IP analysis of mouse skeletal muscle tissue lysate (6000 µg), using DPH2 antibody (3 µg, detection: 1/1000 dilution).

DPH2 Antibody is a Rabbit Polyclonal against DPH2.

**Target:** Diphthamide Biosynthesis Protein 2 (DPH2)

**Clonality:** Polyclonal

**Reactivity:** Human, Mouse

**Tested Applications:** ELISA, WB, IHC, IF/ICC, IP

**Host:** Rabbit

**Recommended dilutions:** WB: 1/500 - 1/2000, IHC: 1/20 - 1/200, IF/ICC: 1/20 - 1/200, IP: 1/200 - 1/2000. Optimal dilutions/concentrations should be determined by the end user.

**Conjugation:** Unconjugated

# Datasheet

Version: 1.0.0  
Revision date: 18 Oct 2024



<b>Immunogen:</b>	DPH2 homolog (S. cerevisiae)
<b>Isotype:</b>	IgG
<b>Form:</b>	Liquid
<b>Purity:</b>	≥ 95% (SDS-PAGE)
<b>Purification:</b>	Purified by immunogen affinity chromatography.
<b>Storage:</b>	Aliquot and store at -20°C. Avoid repeated freeze/thaw cycles.
<b>Validity:</b>	12 months.
<b>UniProt Primary AC:</b>	Q9BQC3 ( <a href="#">UniProt</a> , <a href="#">ExPASy</a> )
<b>Gene Symbol:</b>	DPH2
<b>GeneID:</b>	<a href="#">1802</a>
<b>OMIM:</b>	<a href="#">603456</a>
<b>HGNC:</b>	3004
<b>Ensembl:</b>	ENSG00000132768
<b>String:</b>	<a href="#">9606.ENSP00000255108</a>
<b>Molecular Weight:</b>	Observed MW: 52 kDa
<b>Buffer:</b>	PBS, pH 7.3, with 0.02% sodium azide and 50% glycerol.
<b>Concentration:</b>	2 mg/ml
<b>Note:</b>	This product is for research use only.