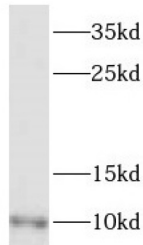


Dynein Light Chain LC8-Type 2 (DYNLL2) Antibody

Catalogue No.: abx232588



WB analysis of human heart tissue, using DYNLL2 antibody (1/400 dilution).

DYNLL2 Antibody is a Rabbit Polyclonal against DYNLL2.

Target:	Dynein Light Chain LC8-Type 2 (DYNLL2)
Clonality:	Polyclonal
Reactivity:	Human, Mouse, Rat
Tested Applications:	ELISA, WB
Host:	Rabbit
Recommended dilutions:	WB: 1/500 - 1/2000. Optimal dilutions/concentrations should be determined by the end user.
Conjugation:	Unconjugated
Immunogen:	dynein, light chain, LC8-type 2
Isotype:	IgG
Form:	Liquid
Purity:	≥ 95% (SDS-PAGE)
Purification:	Purified by immunogen affinity chromatography.
Storage:	Aliquot and store at -20°C. Avoid repeated freeze/thaw cycles.
Validity:	12 months.
UniProt Primary AC:	Q96FJ2 (UniProt , ExPASy)

Datasheet

Version: 1.0.0
Revision date: 15 Jan 2025

Gene Symbol:	DYNLL2
GeneID:	140735
OMIM:	608942
HGNC:	24596
KEGG:	hsa:140735
Ensembl:	ENSG00000264364
String:	9606.ENSP00000477310
Molecular Weight:	Observed MW: 10 kDa
Buffer:	PBS, pH 7.3, with 0.02% sodium azide and 50% glycerol.
Concentration:	2 mg/ml
Note:	This product is for research use only.

For Reference Only