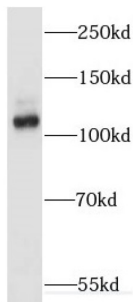


Band 4.1-Like Protein 1 (EPB41L1) Antibody

Catalogue No.: abx232796



WB analysis of mouse brain tissue, using EPB41L1 antibody (1/600 dilution).

EPB41L1 Antibody is a Rabbit Polyclonal against EPB41L1.

Target:	Band 4.1-Like Protein 1 (EPB41L1)
Clonality:	Polyclonal
Reactivity:	Human, Mouse, Rat
Tested Applications:	ELISA, WB
Host:	Rabbit
Recommended dilutions:	WB: 1/500 - 1/2000. Optimal dilutions/concentrations should be determined by the end user.
Conjugation:	Unconjugated
Immunogen:	erythrocyte membrane protein band 4.1-like 1
Isotype:	IgG
Form:	Liquid
Purity:	≥ 95% (SDS-PAGE)
Purification:	Purified by immunogen affinity chromatography.
Storage:	Aliquot and store at -20°C. Avoid repeated freeze/thaw cycles.
Validity:	12 months.
UniProt Primary AC:	Q9H4G0 (UniProt , ExPASy)

Datasheet

Version: 1.0.0
Revision date: 28 Nov 2024



Gene Symbol:	EPB41L1
GeneID:	2036
OMIM:	602879
HGNC:	3378
KEGG:	hsa:2036
Ensembl:	ENSG00000088367
String:	9606.ENSP00000337168
Molecular Weight:	Observed MW: 100-130 kDa
Buffer:	PBS, pH 7.3, with 0.02% sodium azide and 50% glycerol.
Concentration:	2 mg/ml
Note:	This product is for research use only.

For Reference Only