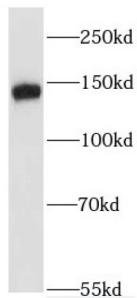


Erythrocyte Membrane Protein Band 4.1 Like 2 (EPB41L2) Antibody

Catalogue No.: abx232797



WB analysis of HeLa cells, using EPB41L2 antibody (1/800 dilution).

EPB41L2 Antibody is a Rabbit Polyclonal against EPB41L2.

Target:	Erythrocyte Membrane Protein Band 4.1 Like 2 (EPB41L2)
Clonality:	Polyclonal
Reactivity:	Human, Mouse, Rat
Tested Applications:	ELISA, WB, IF/ICC
Host:	Rabbit
Recommended dilutions:	WB: 1/500 - 1/2000, IF/ICC: 1/20 - 1/200. Optimal dilutions/concentrations should be determined by the end user.
Conjugation:	Unconjugated
Immunogen:	erythrocyte membrane protein band 4.1-like 2
Isotype:	IgG
Form:	Liquid
Purity:	≥ 95% (SDS-PAGE)
Purification:	Purified by immunogen affinity chromatography.
Storage:	Aliquot and store at -20°C. Avoid repeated freeze/thaw cycles.
Validity:	12 months.
UniProt Primary AC:	O43491 (UniProt , ExpASY)

Datasheet

Version: 2.0.0
Revision date: 17 Feb 2025

Gene Symbol:	EPB41L2
GeneID:	2037
OMIM:	603237
HGNC:	3379
KEGG:	hsa:2037
Ensembl:	ENSG00000079819
String:	9606.ENSP00000338481
Molecular Weight:	Observed MW: 130-150 kDa
Buffer:	PBS, pH 7.3, with 0.02% sodium azide and 50% glycerol.
Concentration:	2 mg/ml
Note:	This product is for research use only.

For Reference Only