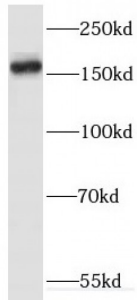
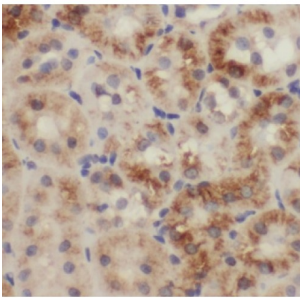


ErbB2 Interacting Protein (ERBB2IP) Antibody

Catalogue No.: abx232827



WB analysis of MCF7 cells, using ERBB2IP antibody (1/1000 dilution).



IHC-P analysis of human kidney tissue, using ERBB2IP Antibody (1/50 dilution).

ERBB2IP Antibody is a Rabbit Polyclonal against ERBB2IP.

Target: ErbB2 Interacting Protein (ERBB2IP)

Clonality: Polyclonal

Reactivity: Human

Tested Applications: ELISA, WB, IHC

Host: Rabbit

Recommended dilutions: WB: 1/500 - 1/2000, IHC: 1/20 - 1/200. Optimal dilutions/concentrations should be determined by the end user.

Conjugation: Unconjugated

Immunogen: erbb2 interacting protein

Isotype: IgG

Form: Liquid

Purity: ≥ 95% (SDS-PAGE)

Datasheet

Version: 2.0.0
Revision date: 29 Aug 2024



Purification:	Purified by immunogen affinity chromatography.
Storage:	Aliquot and store at -20°C. Avoid repeated freeze/thaw cycles.
Validity:	12 months.
UniProt Primary AC:	Q96RT1 (UniProt , ExPASy)
Gene Symbol:	ERBIN
GeneID:	55914
OMIM:	606944
HGNC:	15842
KEGG:	hsa:55914
Ensembl:	ENSG00000112851
String:	9606.ENSP00000426632
Molecular Weight:	Observed MW: 150-180 kDa
Buffer:	PBS, pH 7.3, with 0.02% sodium azide and 50% glycerol.
Concentration:	2 mg/ml
Note:	This product is for research use only.

For Reference Only