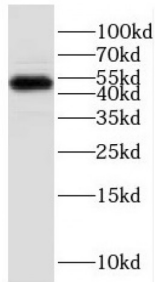
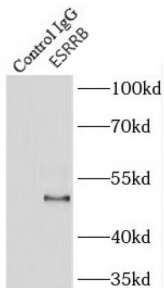


Estrogen Related Receptor Beta (ESRRB) Antibody

Catalogue No.: abx232871



WB analysis of PC-13 cells, using ESRRB antibody (1/1000 dilution).



IP analysis of A549 cell lysate (1040 µg), using ESRRB antibody (4 µg, detection: 1/300 dilution).

ESRRB Antibody is a Rabbit Polyclonal against ESRRB.

Target:	Estrogen Related Receptor Beta (ESRRB)
Clonality:	Polyclonal
Reactivity:	Human, Mouse, Rat
Tested Applications:	ELISA, WB, IP
Host:	Rabbit
Recommended dilutions:	WB: 1/500 - 1/2000, IP: 1/200 - 1/2000. Optimal dilutions/concentrations should be determined by the end user.
Conjugation:	Unconjugated
Immunogen:	estrogen-related receptor beta
Isotype:	IgG
Form:	Liquid
Purity:	≥ 95% (SDS-PAGE)

Datasheet

Version: 2.0.0
Revision date: 16 Jul 2024



Purification:	Purified by immunogen affinity chromatography.
Storage:	Aliquot and store at -20°C. Avoid repeated freeze/thaw cycles.
Validity:	12 months.
UniProt Primary AC:	O95718 (UniProt , ExPASy)
Gene Symbol:	ESRRB
GeneID:	2103
OMIM:	602167
HGNC:	3473
KEGG:	hsa:2103
Ensembl:	ENSG00000119715
String:	9606.ENSP00000422488
Molecular Weight:	Observed MW: 45-49 kDa
Buffer:	PBS, pH 7.3, with 0.02% sodium azide and 50% glycerol.
Concentration:	2 mg/ml
Note:	This product is for research use only.

For Reference Only