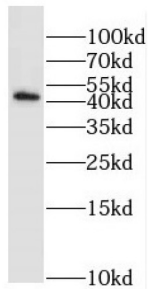


Exo/Endonuclease G (EXOG) Antibody

Catalogue No.: abx232897



WB analysis of mouse cerebellum tissue, using EXOG antibody (1/500 dilution).

EXOG Antibody is a Rabbit Polyclonal against EXOG.

Target:	Exo/Endonuclease G (EXOG)
Clonality:	Polyclonal
Reactivity:	Human, Mouse, Rat
Tested Applications:	ELISA, WB
Host:	Rabbit
Recommended dilutions:	WB: 1/500 - 1/2000. Optimal dilutions/concentrations should be determined by the end user.
Conjugation:	Unconjugated
Immunogen:	endo/exonuclease(5'-3'), endonuclease G-like
Isotype:	IgG
Form:	Liquid
Purity:	≥ 95% (SDS-PAGE)
Purification:	Purified by immunogen affinity chromatography.
Storage:	Aliquot and store at -20°C. Avoid repeated freeze/thaw cycles.
Validity:	12 months.
UniProt Primary AC:	Q9Y2C4 (UniProt , ExPASy)

Datasheet

Version: 3.0.0
Revision date: 25 Mar 2025



Gene Symbol: EXOG

GeneID: [9941](#)

OMIM: [604051](#)

HGNC: 3347

Ensembl: ENSG00000157036

String: [9606.ENSP00000287675](#)

Molecular Weight: Observed MW: 45 kDa

Buffer: PBS, pH 7.3, with 0.02% sodium azide and 50% glycerol.

Concentration: 2 mg/ml

Note: THIS PRODUCT IS FOR RESEARCH USE ONLY. NOT FOR USE IN DIAGNOSTIC, THERAPEUTIC OR COSMETIC PROCEDURES. NOT FOR HUMAN OR ANIMAL CONSUMPTION.

For Reference Only