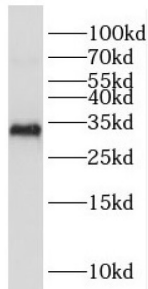
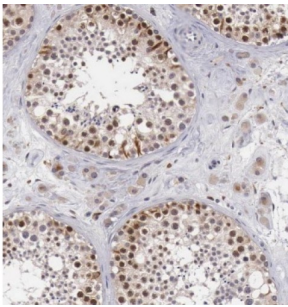


Exosome Component 8 (EXOSC8) Antibody

Catalogue No.: abx232907



WB analysis of HeLa cells, using EXOSC8 antibody (1/500 dilution).



IHC-P analysis of human testis tissue, using EXOSC8 Antibody (1/50 dilution).

EXOSC8 Antibody is a Rabbit Polyclonal against EXOSC8.

Target:	Exosome Component 8 (EXOSC8)
Clonality:	Polyclonal
Reactivity:	Human, Mouse, Rat
Tested Applications:	ELISA, WB, IHC, IF/ICC
Host:	Rabbit
Recommended dilutions:	WB: 1/500 - 1/2000, IHC: 1/20 - 1/200, IF/ICC: 1/20 - 1/200. Optimal dilutions/concentrations should be determined by the end user.
Conjugation:	Unconjugated
Immunogen:	exosome component 8
Isotype:	IgG
Form:	Liquid
Purity:	≥ 95% (SDS-PAGE)

Datasheet

Version: 2.0.0
Revision date: 28 Nov 2024



Purification:	Purified by immunogen affinity chromatography.
Storage:	Aliquot and store at -20°C. Avoid repeated freeze/thaw cycles.
Validity:	12 months.
UniProt Primary AC:	Q96B26 (UniProt , ExpASY)
Gene Symbol:	EXOSC8
GeneID:	11340
OMIM:	606019
HGNC:	17035
KEGG:	hsa:11340
Ensembl:	ENSG00000120699
String:	9606.ENSP00000374354
Molecular Weight:	Observed MW: 30-35 kDa
Buffer:	PBS, pH 7.3, with 0.02% sodium azide and 50% glycerol.
Concentration:	2 mg/ml
Note:	This product is for research use only.

For Reference Only