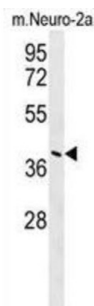
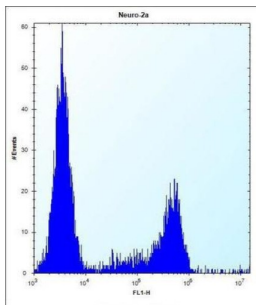


## Protein CASC4 (CASC4) Antibody

Catalogue No.: abx025754



The increased expression level of this gene is associated with HER-2/neu proto-oncogene overexpression. Amplification and resulting overexpression of this proto-oncogene are found in approximately 30% of human breast and 20% of human ovarian cancers. Further characterization of the product of this gene may yield insight into the fundamental biology and pathogenetic effects of HER-2/neu overexpression in human breast and ovarian cancer cells. Alternatively spliced variants encoding different isoforms have been identified for this gene.

**Target:** Protein CASC4 (CASC4)

**Clonality:** Polyclonal

**Reactivity:** Human, Mouse

**Tested Applications:** ELISA, WB, FCM

**Host:** Rabbit

**Recommended dilutions:** WB: 1/1000, FCM: 1/10 - 1/50. Optimal dilutions/concentrations should be determined by the end user.

**Conjugation:** Unconjugated

**Immunogen:** KLH-conjugated synthetic peptide between 336-365 amino acids from the C-terminal region of human CASC4.

**Isotype:** IgG

# Datasheet

Version: 5.0.0  
Revision date: 27 Sep 2024



|                            |   |
|----------------------------|---|
| <b>Form:</b>               | Liquid  |
| <b>Purification:</b>       | Purified through a protein A column, followed by peptide affinity purification. |
| <b>Storage:</b>            | Aliquot and store at -20°C. Avoid repeated freeze/thaw cycles.                  |
| <b>UniProt Primary AC:</b> | Q6P4E1 ( <a href="#">UniProt</a> , <a href="#">ExPASy</a> )                     |
| <b>KEGG:</b>               | hsa:113201  |
| <b>String:</b>             | <a href="#">9606.ENSP00000299957</a>  |
| <b>Molecular Weight:</b>   | Calculated MW: 49.5 kDa   |
| <b>Buffer:</b>             | PBS containing 0.09% sodium azide.  |
| <b>Note:</b>               | This product is for research use only.  |

For Reference Only