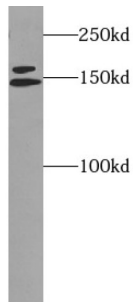
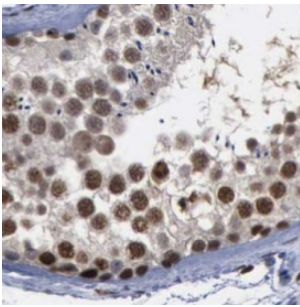


## Fanconi Anemia Complementation Group D2 (FANCD2) Antibody

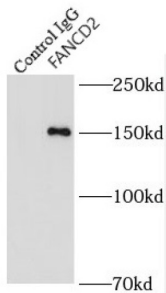
Catalogue No.: abx233006



WB analysis of HL-60 cells, using Fanconi Anemia Group D2 Protein (FANCD2) antibody (1/500 dilution).



IHC-P analysis of human testis tissue, using Fanconi Anemia Group D2 Protein (FANCD2) antibody (1/50 dilution).



IP analysis of mouse testis tissue lysate (6000 µg), using Fanconi Anemia Group D2 Protein (FANCD2) antibody (4 µg, detection: 1/300 dilution).

Fanconi Anemia Group D2 Protein (FANCD2) Antibody is a Rabbit Polyclonal against Fanconi Anemia Group D2 Protein (FANCD2).

**Target:** Fanconi Anemia Complementation Group D2 (FANCD2)

**Clonality:** Polyclonal

**Reactivity:** Human, Mouse

**Tested Applications:** ELISA, WB, IHC, IP

**Host:** Rabbit

**Recommended dilutions:** WB: 1/200 - 1/1000, IHC: 1/20 - 1/200, IP: 1/200 - 1/1000. Optimal dilutions/concentrations should be determined by the end user.

# Datasheet

Version: 2.0.0  
Revision date: 31 Jan 2025



<b>Conjugation:</b>	Unconjugated
<b>Immunogen:</b>	Fanconi anemia, complementation group D2
<b>Isotype:</b>	IgG
<b>Form:</b>	Liquid
<b>Purity:</b>	≥ 95% (SDS-PAGE)
<b>Purification:</b>	Purified by immunogen affinity chromatography.
<b>Storage:</b>	Aliquot and store at -20°C. Avoid repeated freeze/thaw cycles.
<b>Validity:</b>	12 months.
<b>UniProt Primary AC:</b>	Q9BXW9 ( <a href="#">UniProt</a> , <a href="#">ExPASy</a> )
<b>Gene Symbol:</b>	FANCD2
<b>GeneID:</b>	<a href="#">2177</a>
<b>OMIM:</b>	<a href="#">227646</a>
<b>HGNC:</b>	3585
<b>Ensembl:</b>	ENSG00000144554
<b>String:</b>	<a href="#">9606.ENSP00000287647</a>
<b>Molecular Weight:</b>	Observed MW: 150-155 kDa
<b>Buffer:</b>	PBS, pH 7.3, with 0.02% sodium azide and 50% glycerol.
<b>Concentration:</b>	2 mg/ml
<b>Note:</b>	This product is for research use only.