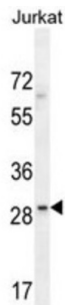


Leucine-Rich Repeat-Containing Protein 25 (LRRC25) Antibody

Catalogue No.: abx025784



May be involved in the activation of cells of innate and acquired immunity.

Target:	Leucine-Rich Repeat-Containing Protein 25 (LRRC25)
Clonality:	Polyclonal
Reactivity:	Human
Tested Applications:	ELISA, WB
Host:	Rabbit
Recommended dilutions:	WB: 1/1000. Optimal dilutions/concentrations should be determined by the end user.
Conjugation:	Unconjugated
Immunogen:	KLH-conjugated synthetic peptide between 242-270 amino acids from the C-terminal region of human LRRC25.
Isotype:	IgG
Form:	Liquid
Purification:	Purified through a protein A column, followed by peptide affinity purification.
Storage:	Aliquot and store at -20°C. Avoid repeated freeze/thaw cycles.
UniProt Primary AC:	Q8N386 (UniProt , ExPASy)
Gene Symbol:	LRRC25
KEGG:	hsa:126364

Datasheet

Version: 4.0.0
Revision date: 10 Mar 2025



String: [9606.ENSF00000340983](#)

Molecular Weight: Calculated MW: 33.2 kDa

Buffer: PBS containing 0.09% sodium azide.

Note: THIS PRODUCT IS FOR RESEARCH USE ONLY. NOT FOR USE IN DIAGNOSTIC, THERAPEUTIC OR COSMETIC PROCEDURES. NOT FOR HUMAN OR ANIMAL CONSUMPTION.

For Reference Only