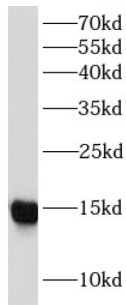
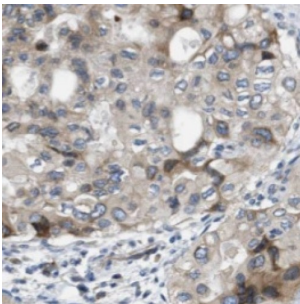


Galectin 1 (LGALS1) Antibody

Catalogue No.: abx233315



WB analysis of HepG2 cells, using GAL1 antibody (1/1000 dilution).



IHC-P analysis of human pancreas cancer tissue, using GAL1 antibody (1/100 dilution).

Galectin 1 (LGALS1) Antibody is a Mouse Monoclonal against Galectin 1 (LGALS1).

Target:	Galectin 1 (LGALS1)
Clonality:	Monoclonal
Reactivity:	Human, Mouse
Tested Applications:	ELISA, WB, IHC
Host:	Mouse
Recommended dilutions:	WB: 1/500 - 1/2000, IHC: 1/20 - 1/200. Optimal dilutions/concentrations should be determined by the end user.
Conjugation:	Unconjugated
Immunogen:	lectin, galactoside-binding, soluble, 1
Isotype:	IgG ₁
Form:	Liquid
Purity:	≥ 95% (SDS-PAGE)

Datasheet

Version: 3.0.0
Revision date: 24 Nov 2024



Purification:	Purified by Protein A and Protein G affinity chromatography.
Storage:	Aliquot and store at -20°C. Avoid repeated freeze/thaw cycles.
Validity:	12 months.
UniProt Primary AC:	P09382 (UniProt , ExpASY)
Gene Symbol:	LGALS1
KEGG:	hsa:3956
String:	9606.ENSP00000215909
Molecular Weight:	Observed MW: 15 kDa
Buffer:	PBS, pH 7.3, with 0.02% sodium azide and 50% glycerol.
Concentration:	2 mg/ml
Note:	This product is for research use only.

For Reference Only