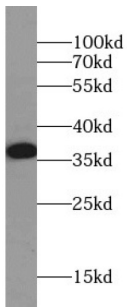
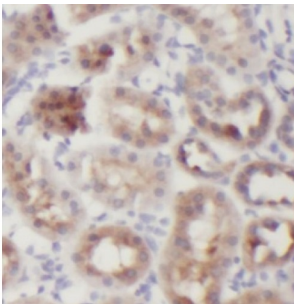


Glyceraldehyde-3-Phosphate Dehydrogenase (GAPDH) Antibody

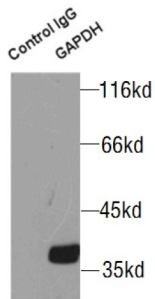
Catalogue No.: abx233343



WB analysis of HeLa cells, using GAPDH antibody (1/10000 dilution).



IHC-P analysis of human kidney tissue, using GAPDH Antibody (1/100 dilution).



IP analysis of HeLa cell lysate (3000 µg), using GAPDH antibody (4 µg, detection: 1/3000 dilution).

GAPDH Antibody is a Mouse Monoclonal against GAPDH.

Target: Glyceraldehyde-3-Phosphate Dehydrogenase (GAPDH)

Clonality: Monoclonal

Reactivity: Human, Mouse, Rat, Zebrafish

Tested Applications: ELISA, WB, IHC, IF/ICC, FCM, IP

Host: Mouse

Recommended dilutions: WB: 1/5000 - 1/20000, IHC: 1/50 - 1/500, IF/ICC: 1/20 - 1/200, IP: 1/3000 - 1/20000. Optimal dilutions/concentrations should be determined by the end user.

Conjugation: Unconjugated

Datasheet

Version: 2.0.0
Revision date: 22 Dec 2024



Immunogen:	glyceraldehyde-3-phosphate dehydrogenase
Isotype:	IgG ₁
Form:	Liquid
Purity:	≥ 95% (SDS-PAGE)
Purification:	Purified by Protein A and Protein G affinity chromatography.
Storage:	Aliquot and store at -20°C. Avoid repeated freeze/thaw cycles.
Validity:	12 months.
UniProt Primary AC:	P04406 (UniProt , ExpASY)
GeneID:	2597
NCBI Accession:	NP_001243728.1
KEGG:	hsa:2597
String:	9606.ENSP00000229239
Molecular Weight:	Observed MW: 36 kDa
Buffer:	PBS, pH 7.3, with 0.02% sodium azide and 50% glycerol.
Concentration:	2 mg/ml
Note:	This product is for research use only.

For Reference Only