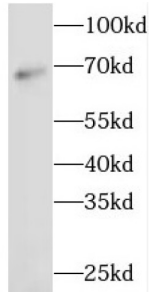


Glyceraldehyde-3-Phosphate Dehydrogenase, Spermatogenic (GAPDHS) Antibody

Catalogue No.: abx233345



WB analysis of mouse testis tissue, using GAPDHS antibody (1/800 dilution).

GAPDHS Antibody is a Rabbit Polyclonal against GAPDHS.

Target:	Glyceraldehyde-3-Phosphate Dehydrogenase, Spermatogenic (GAPDHS)
Clonality:	Polyclonal
Reactivity:	Human, Mouse, Rat
Tested Applications:	ELISA, WB
Host:	Rabbit
Recommended dilutions:	WB: 1/500 - 1/2000. Optimal dilutions/concentrations should be determined by the end user.
Conjugation:	Unconjugated
Immunogen:	glyceraldehyde-3-phosphate dehydrogenase, spermatogenic
Isotype:	IgG
Form:	Liquid
Purity:	≥ 95% (SDS-PAGE)
Purification:	Purified by immunogen affinity chromatography.
Storage:	Aliquot and store at -20°C. Avoid repeated freeze/thaw cycles.
Validity:	12 months.

Datasheet

Version: 2.0.0
Revision date: 11 Mar 2025



UniProt Primary AC: O14556 ([UniProt](#), [ExpASY](#))

Gene Symbol: GAPDHS

GeneID: [26330](#)

OMIM: [609169](#)

HGNC: 24864

KEGG: hsa:26330

Ensembl: ENSG00000105679

String: [9606.ENSP0000022286](#)

Molecular Weight: Observed MW: 69 kDa

Buffer: PBS, pH 7.3, with 0.02% sodium azide and 50% glycerol.

Concentration: 2 mg/ml

Note: THIS PRODUCT IS FOR RESEARCH USE ONLY. NOT FOR USE IN DIAGNOSTIC, THERAPEUTIC OR COSMETIC PROCEDURES. NOT FOR HUMAN OR ANIMAL CONSUMPTION.

For Reference Only