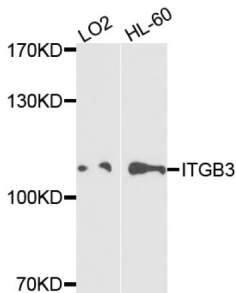
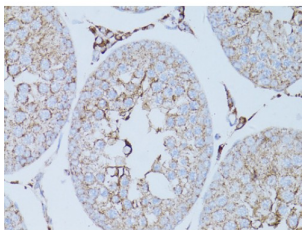


Integrin Beta III / CD61 (ITGB3) Antibody

Catalogue No.: abx001980



Western blot analysis of extracts of various cell lines, using ITGB3 antibody (abx001980) at 1/1000 dilution.



Immunohistochemistry of paraffin-embedded rat testis using ITGB3 antibody (abx001980) at dilution of 1:50 (40x lens).

ITGB3 Antibody is a Rabbit Polyclonal antibody against ITGB3. The ITGB3 protein product is the integrin beta chain beta 3. Integrins are integral cell-surface proteins composed of an alpha chain and a beta chain. A given chain may combine with multiple partners resulting in different integrins. Integrin beta 3 is found along with the alpha IIb chain in platelets. Integrins are known to participate in cell adhesion as well as cell-surface mediated signalling.

Target: Integrin Beta III / CD61 (ITGB3)

Clonality: Polyclonal

Reactivity: Human, Mouse, Rat

Tested Applications: WB, IHC

Host: Rabbit

Recommended dilutions: WB: 1/500 - 1/1000, IHC-P: 1/50 - 1/200. Not tested in IHC-F. Optimal dilutions/concentrations should be determined by the end user.

Conjugation: Unconjugated

Immunogen: Recombinant fusion protein containing a sequence corresponding to amino acids 80-430 of human Integrin beta 3 (ITGB3/CD61).

Isotype: IgG

Datasheet

Version: 2.0.0
Revision date: 31 Oct 2024



Form:	Liquid
Purification:	Purified by affinity chromatography.
Storage:	Aliquot and store at -20°C. Avoid repeated freeze/thaw cycles.
UniProt Primary AC:	P05106 (UniProt , ExpASY)
Gene Symbol:	ITGB3
GeneID:	3690
NCBI Accession:	NP_000203.2
KEGG:	hsa:3690
String:	9606.ENSP00000452786
Molecular Weight:	Calculated MW: 87 kDa Observed MW: 100 kDa
Buffer:	PBS, pH 7.3, containing 0.02% sodium azide, 50% glycerol.
Concentration:	> 0.2 mg/ml
Note:	This product is for research use only.

For Reference Only