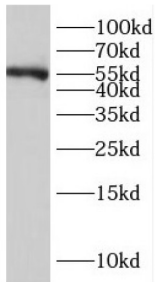
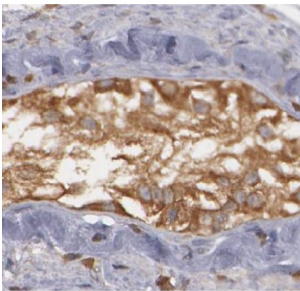


# Nuclear Receptor Subfamily 6 Group A Member 1 (NR6A1) Antibody

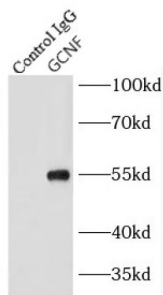
Catalogue No.: abx233390



WB analysis of PC-3 cells, using NR6A1 antibody (1/300 dilution).



IHC-P analysis of human testis tissue, using NR6A1 Antibody (1/50 dilution).



IP analysis of mouse testis tissue lysate (4000 µg), using GCNF antibody (4 µg, detection: 1/800 dilution).

GCNF Antibody is a Rabbit Polyclonal against GCNF.

**Target:** Nuclear Receptor Subfamily 6 Group A Member 1 (NR6A1)

**Clonality:** Polyclonal

**Reactivity:** Human, Mouse, Rat

**Tested Applications:** ELISA, WB, IHC, IP

**Host:** Rabbit

**Recommended dilutions:** WB: 1/500 - 1/2000, IHC: 1/20 - 1/200, IP: 1/200 - 1/1000. Optimal dilutions/concentrations should be determined by the end user.

**Conjugation:** Unconjugated

# Datasheet

Version: 3.0.0  
Revision date: 05 Feb 2025



<b>Immunogen:</b>	nuclear receptor subfamily 6, group A, member 1
<b>Isotype:</b>	IgG
<b>Form:</b>	Liquid
<b>Purity:</b>	≥ 95% (SDS-PAGE)
<b>Purification:</b>	Purified by immunogen affinity chromatography.
<b>Storage:</b>	Aliquot and store at -20°C. Avoid repeated freeze/thaw cycles.
<b>Validity:</b>	12 months.
<b>UniProt Primary AC:</b>	Q15406 ( <a href="#">UniProt</a> , <a href="#">ExPASy</a> )
<b>KEGG:</b>	hsa:2649
<b>String:</b>	<a href="#">9606.ENSP00000420267</a>
<b>Molecular Weight:</b>	Observed MW: 55 kDa
<b>Buffer:</b>	PBS, pH 7.3, with 0.02% sodium azide and 50% glycerol.
<b>Concentration:</b>	2 mg/ml
<b>Note:</b>	This product is for research use only.

For Reference Only