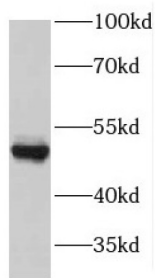
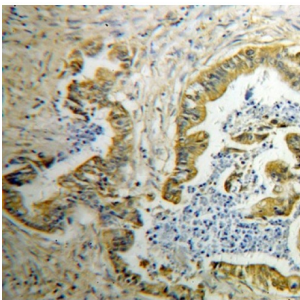


GDP Dissociation Inhibitor 2 (GDI2) Antibody

Catalogue No.: abx233407



WB analysis of HepG2 cells, using GDI2 antibody (1/300 dilution).



IHC-P analysis of human skin tissue, using GDI2 antibody (1/50 dilution).

GDI2 Antibody is a Rabbit Polyclonal against GDI2.

Target: GDP Dissociation Inhibitor 2 (GDI2)

Clonality: Polyclonal

Reactivity: Human

Tested Applications: ELISA, WB, IHC

Host: Rabbit

Recommended dilutions: WB: 1/500 - 1/2000, IHC: 1/20 - 1/200. Optimal dilutions/concentrations should be determined by the end user.

Conjugation: Unconjugated

Immunogen: GDP dissociation inhibitor 2

Isotype: IgG

Form: Liquid

Purity: ≥ 95% (SDS-PAGE)

Datasheet

Version: 1.0.0
Revision date: 17 Feb 2025



| | |
|----------------------------|--|
| Purification: | Purified by immunogen affinity chromatography. |
| Storage: | Aliquot and store at -20°C. Avoid repeated freeze/thaw cycles. |
| Validity: | 12 months. |
| UniProt Primary AC: | P50395 (UniProt , ExPASy) |
| Gene Symbol: | GDI2 |
| GeneID: | 2665 |
| OMIM: | 600767 |
| HGNC: | 4227 |
| KEGG: | hsa:2665 |
| Ensembl: | ENSG00000057608 |
| String: | 9606.ENSP00000369538 |
| Molecular Weight: | Observed MW: 46-50 kDa |
| Buffer: | PBS, pH 7.3, with 0.02% sodium azide and 50% glycerol. |
| Concentration: | 2 mg/ml |
| Note: | This product is for research use only. |

For Reference Only