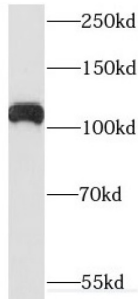


## Rho Guanine Nucleotide Exchange Factor 2 / GEF-H1 (ARHGEF2) Antibody

Catalogue No.: abx233412



WB analysis of PC-3 cells, using GEF-H1 antibody (1/1000 dilution).

GEF-H1 Antibody is a Rabbit Polyclonal against GEF-H1.

<b>Target:</b>	Rho Guanine Nucleotide Exchange Factor 2 / GEF-H1 (ARHGEF2)
<b>Clonality:</b>	Polyclonal
<b>Reactivity:</b>	Human
<b>Tested Applications:</b>	ELISA, WB
<b>Host:</b>	Rabbit
<b>Recommended dilutions:</b>	WB: 1/500 - 1/2000. Optimal dilutions/concentrations should be determined by the end user.
<b>Conjugation:</b>	Unconjugated
<b>Immunogen:</b>	rho/rac guanine nucleotide exchange factor(GEF) 2
<b>Isotype:</b>	IgG
<b>Form:</b>	Liquid
<b>Purity:</b>	≥ 95% (SDS-PAGE)
<b>Purification:</b>	Purified by immunogen affinity chromatography.
<b>Storage:</b>	Aliquot and store at -20°C. Avoid repeated freeze/thaw cycles.
<b>Validity:</b>	12 months.

# Datasheet

Version: 1.0.0  
Revision date: 28 Nov 2024



**UniProt Primary AC:** Q92974 ([UniProt](#), [ExPASy](#))

**Gene Symbol:** ARHGEF2

**GeneID:** [9181](#)

**OMIM:** [607560](#)

**HGNC:** 682

**KEGG:** hsa:9181

**Ensembl:** ENSG00000116584

**String:** [9606.ENSP00000354837](#)

**Molecular Weight:** Observed MW: 111 kDa

**Buffer:** PBS, pH 7.3, with 0.02% sodium azide and 50% glycerol.

**Concentration:** 2 mg/ml

**Note:** This product is for research use only.

For Reference Only