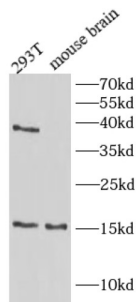


TSC22 Domain Family Protein 3 (TSC22D3) Antibody

Catalogue No.: abx233455



WB analysis of extracts of Lane 1: 293T - Human embryonic kidney cell line and Lane 2: Mouse brain tissue, using TSC22D3 antibody (1/500 dilution).

TSC22D3 Antibody is a Rabbit Polyclonal against TSC22D3.

Target:	TSC22 Domain Family Protein 3 (TSC22D3)
Clonality:	Polyclonal
Reactivity:	Human, Mouse, Rat
Tested Applications:	ELISA, WB
Host:	Rabbit
Recommended dilutions:	WB: 1/500 - 1/2000. Optimal dilutions/concentrations should be determined by the end user.
Conjugation:	Unconjugated
Immunogen:	TSC22 domain family, member 3
Isotype:	IgG
Form:	Liquid
Purity:	≥ 95% (SDS-PAGE)
Purification:	Purified by immunogen affinity chromatography.
Storage:	Aliquot and store at -20°C. Avoid repeated freeze/thaw cycles.
Validity:	12 months.
UniProt Primary AC:	Q99576 (UniProt , ExPASy)

Datasheet

Version: 3.0.0
Revision date: 18 Mar 2025



Gene Symbol: TSC22D3

GeneID: [1831](#)

OMIM: [300506](#)

HGNC: 3051

KEGG: hsa:1831

Ensembl: ENSG00000157514

String: [9606.ENSP00000361458](#)

Molecular Weight: Observed MW: 15 kDa -17 kDa

Buffer: PBS, pH 7.3, with 0.02% sodium azide and 50% glycerol.

Concentration: 2 mg/ml

Note: THIS PRODUCT IS FOR RESEARCH USE ONLY. NOT FOR USE IN DIAGNOSTIC, THERAPEUTIC OR COSMETIC PROCEDURES. NOT FOR HUMAN OR ANIMAL CONSUMPTION.

For Reference Only