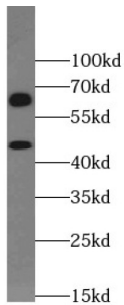
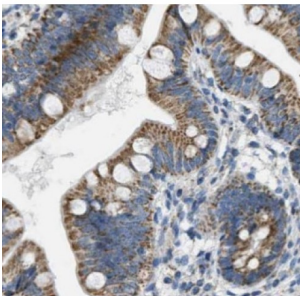


Glucose Transporter 2 / GLUT2 (SLC2A2) Antibody

Catalogue No.: abx233501



WB analysis of rat liver tissue, using SLC2A2 antibody (1/400 dilution).



IHC-P analysis of human small intestine tissue, using SLC2A2 Antibody (1/50 dilution).

GLUT2 Antibody is a Rabbit Polyclonal against GLUT2.

Target:	Glucose Transporter 2 / GLUT2 (SLC2A2)
Clonality:	Polyclonal
Reactivity:	Human, Mouse, Rat
Tested Applications:	ELISA, WB, IHC
Host:	Rabbit
Recommended dilutions:	WB: 1/200 - 1/1000, IHC: 1/50 - 1/1000, IP: 1/500 - 1/2000. Optimal dilutions/concentrations should be determined by the end user.
Conjugation:	Unconjugated
Immunogen:	solute carrier family 2, facilitated glucose transporter member 2
Isotype:	IgG
Form:	Liquid
Purity:	≥ 95% (SDS-PAGE)

Datasheet

Version: 2.0.0
Revision date: 17 Feb 2025



Purification:	Purified by immunogen affinity chromatography.
Storage:	Aliquot and store at -20°C. Avoid repeated freeze/thaw cycles.
Validity:	12 months.
UniProt Primary AC:	P11168 (UniProt , ExpASY)
GeneID:	6514
NCBI Accession:	NP_000331.1
KEGG:	hsa:6514
String:	9606.ENSP00000323568
Molecular Weight:	Observed MW: 60-70 kDa, 38-45 kDa
Buffer:	PBS, pH 7.3, with 0.02% sodium azide and 50% glycerol.
Concentration:	2 mg/ml
Note:	This product is for research use only.

For Reference Only