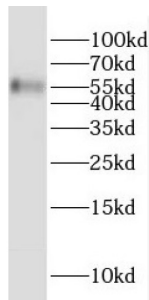
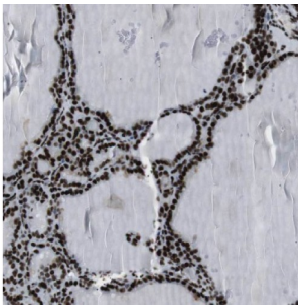


Germ Cell-Less Protein-Like 1 (GMCL1) Antibody

Catalogue No.: abx233519



WB analysis of human heart tissue, using GMCL1 antibody (1/1500 dilution).



IHC-P analysis of human thyroid tissue, using GMCL1 Antibody (1/50 dilution).

GMCL1 Antibody is a Rabbit Polyclonal against GMCL1.

Target: Germ Cell-Less Protein-Like 1 (GMCL1)

Clonality: Polyclonal

Reactivity: Human, Mouse, Rat

Tested Applications: ELISA, WB, IHC

Host: Rabbit

Recommended dilutions: WB: 1/500 - 1/2000, IHC: 1/20 - 1/200. Optimal dilutions/concentrations should be determined by the end user.

Conjugation: Unconjugated

Immunogen: germ cell-less homolog 1 (Drosophila)

Isotype: IgG

Form: Liquid

Purity: ≥ 95% (SDS-PAGE)

Datasheet

Version: 2.0.0
Revision date: 23 Feb 2025



Purification:	Purified by immunogen affinity chromatography.
Storage:	Aliquot and store at -20°C. Avoid repeated freeze/thaw cycles.
Validity:	12 months.
UniProt Primary AC:	Q96IK5 (UniProt , ExpASY)
Gene Symbol:	GMCL1
GeneID:	64395
HGNC:	23843
KEGG:	hsa:64395
Ensembl:	ENSG00000087338
String:	9606.ENSP00000282570
Molecular Weight:	Observed MW: 55 kDa
Buffer:	PBS, pH 7.3, with 0.02% sodium azide and 50% glycerol.
Concentration:	2 mg/ml
Note:	This product is for research use only.

For Reference Only