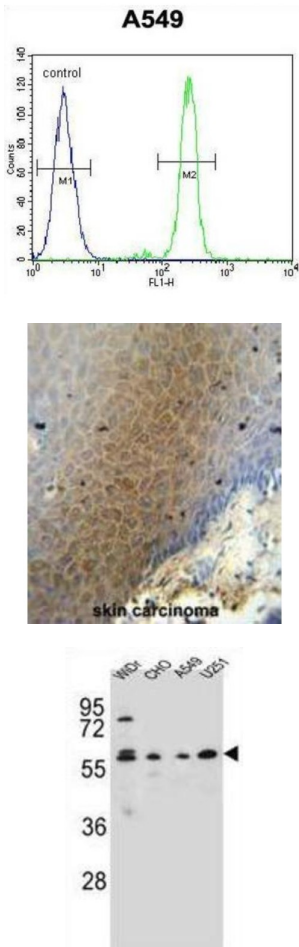


Centrosomal Protein 70 kDa (CEP70) Antibody

Catalogue No.: abx025819



CEP70 Antibody is a Rabbit Polyclonal antibody against CEP70.

Target: Centrosomal Protein 70 kDa (CEP70)

Clonality: Polyclonal

Reactivity: Human, Hamster

Tested Applications: ELISA, WB, IHC, FCM

Host: Rabbit

Recommended dilutions: WB: 1/1000, IHC-P: 1/50 - 1/100, FCM: 1/10 - 1/50. Not tested in IHC-F. Optimal dilutions/concentrations should be determined by the end user.

Conjugation: Unconjugated

Datasheet

Version: 3.0.0
Revision date: 23 Nov 2024



Immunogen:	KLH-conjugated synthetic peptide between 309-338 amino acids from the Central region of human CEP70.
Isotype:	IgG
Form:	Liquid
Purification:	Purified through a protein A column, followed by peptide affinity purification.
Storage:	Aliquot and store at -20°C. Avoid repeated freeze/thaw cycles.
UniProt Primary AC:	Q8NHQ1 (UniProt , ExPASy)
Gene Symbol:	CEP70
KEGG:	hsa:80321
String:	9606.ENSP00000264982
Molecular Weight:	Calculated MW: 69.8 kDa
Buffer:	PBS containing 0.09% sodium azide.
Specificity:	Predicted to react with Monkey CEP70.
Note:	This product is for research use only.

For Reference Only