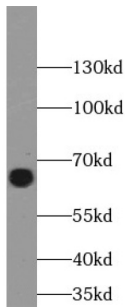
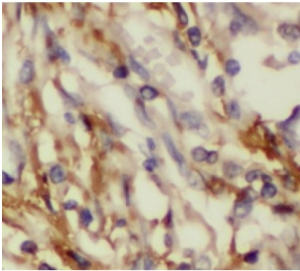


Glucose 6 Phosphate Isomerase (GPI) Antibody

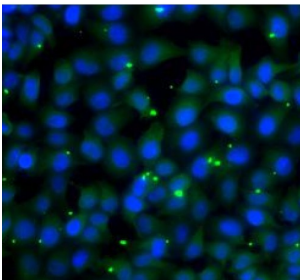
Catalogue No.: abx233582



WB analysis of PC-3 cells, using GPI antibody (1/1000 dilution).



IHC-P analysis of rat kidney tissue, using GPI Antibody (1/200 dilution).



IF analysis of U2OS cells, using GPI antibody Blue: Nuclear staining with DAPI.

GPI Antibody is a Rabbit Polyclonal against GPI.

Target: Glucose 6 Phosphate Isomerase (GPI)

Clonality: Polyclonal

Reactivity: Human, Mouse, Rat

Tested Applications: ELISA, WB, IHC, IF/ICC

Host: Rabbit

Recommended dilutions: WB: 1/500 - 1/2000, IHC: 1/50 - 1/200, IF/ICC: 1/50 - 1/200. Optimal dilutions/concentrations should be determined by the end user.

Conjugation: Unconjugated

Datasheet

Version: 1.0.0
Revision date: 26 Mar 2025



Immunogen:	glucose phosphate isomerase
Isotype:	IgG
Form:	Liquid
Purity:	≥ 95% (SDS-PAGE)
Purification:	Purified by immunogen affinity chromatography.
Storage:	Aliquot and store at -20°C. Avoid repeated freeze/thaw cycles.
Validity:	12 months.
UniProt Primary AC:	P06744 (UniProt , ExpASY)
KEGG:	hsa:2821
String:	9606.ENSP00000405573
Molecular Weight:	Observed MW: 56 kDa
Buffer:	PBS, pH 7.3, with 0.02% sodium azide and 50% glycerol.
Concentration:	2 mg/ml
Note:	THIS PRODUCT IS FOR RESEARCH USE ONLY. NOT FOR USE IN DIAGNOSTIC, THERAPEUTIC OR COSMETIC PROCEDURES. NOT FOR HUMAN OR ANIMAL CONSUMPTION.

For Reference Only