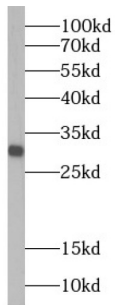
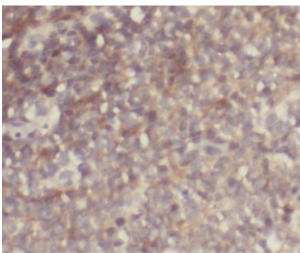


GRB2 Related Adaptor Protein (GRAP) Antibody

Catalogue No.: abx233634



WB analysis of Transfected HEK-293 cells, using GRAP antibody (1/500 dilution).



IHC-P analysis of human lymphoma tissue, using GRAP antibody (1/50 dilution).

GRAP Antibody is a Rabbit Polyclonal against GRAP.

Target: GRB2 Related Adaptor Protein (GRAP)

Clonality: Polyclonal

Reactivity: Human, Mouse, Rat

Tested Applications: ELISA, WB, IHC

Host: Rabbit

Recommended dilutions: WB: 1/200 - 1/2000, IHC: 1/20 - 1/200. Optimal dilutions/concentrations should be determined by the end user.

Conjugation: Unconjugated

Immunogen: GRB2-related adaptor protein

Isotype: IgG

Form: Liquid

Purity: ≥ 95% (SDS-PAGE)

Datasheet

Version: 2.0.0
Revision date: 31 Dec 2024



Purification:	Purified by immunogen affinity chromatography.
Storage:	Aliquot and store at -20°C. Avoid repeated freeze/thaw cycles.
Validity:	12 months.
UniProt Primary AC:	Q13588 (UniProt , ExPASy)
Gene Symbol:	GRAP
GeneID:	10750
OMIM:	604330
HGNC:	4562
KEGG:	hsa:10750
Ensembl:	ENSG00000154016
String:	9606.ENSP00000284154
Molecular Weight:	Observed MW: 25 kDa
Buffer:	PBS, pH 7.3, with 0.02% sodium azide and 50% glycerol.
Concentration:	2 mg/ml
Note:	This product is for research use only.

For Reference Only