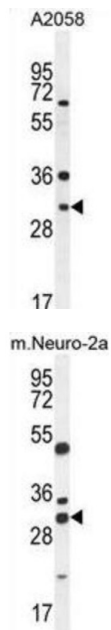


Protein ARV1 (ARV1) Antibody

Catalogue No.: abx025826



May act as a mediator of sterol homeostasis (Potential).

Target: Protein ARV1 (ARV1)

Clonality: Polyclonal

Reactivity: Human, Mouse

Tested Applications: ELISA, WB, IHC, FCM

Host: Rabbit

Recommended dilutions: WB: 1/2000, IHC-P: 1/50 - 1/100, FCM: 1/25. Not tested in IHC-F. Optimal dilutions/concentrations should be determined by the end user.

Conjugation: Unconjugated

Datasheet

Version: 6.0.0
Revision date: 27 Sep 2024



Immunogen:	KLH-conjugated synthetic peptide between 23-51 amino acids from the N-terminal region of human ARV1.
Isotype:	IgG
Form:	Liquid
Purification:	Purified through a protein A column, followed by peptide affinity purification.
Storage:	Aliquot and store at -20°C. Avoid repeated freeze/thaw cycles.
UniProt Primary AC:	Q9H2C2 (UniProt , ExPASy)
Gene Symbol:	ARV1
NCBI Accession:	NP_073623.1
String:	9606.ENSP00000312458
Molecular Weight:	Calculated MW: 31.1 kDa
Buffer:	PBS containing 0.09% sodium azide.
Specificity:	Predicted to react with Cow ARV1.
Note:	This product is for research use only.

For Reference Only