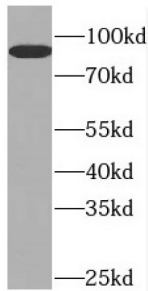
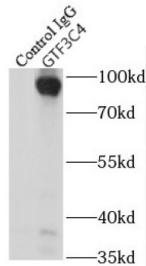


General Transcription Factor 3C Polypeptide 4 (GTF3C4) Antibody

Catalogue No.: abx233717



WB analysis of HeLa cells, using GTF3C4 antibody (1/1000 dilution).



IP analysis of HeLa cell lysate (875 µg), using GTF3C4 antibody (3 µg, detection: 1/800 dilution).

GTF3C4 Antibody is a Rabbit Polyclonal against GTF3C4.

| | |
|-------------------------------|--|
| Target: | General Transcription Factor 3C Polypeptide 4 (GTF3C4) |
| Clonality: | Polyclonal |
| Reactivity: | Human, Mouse, Rat |
| Tested Applications: | ELISA, WB, IP |
| Host: | Rabbit |
| Recommended dilutions: | WB: 1/500 - 1/2000, IP: 1/200 - 1/2000. Optimal dilutions/concentrations should be determined by the end user. |
| Conjugation: | Unconjugated |
| Immunogen: | general transcription factor IIIC, polypeptide 4, 90kDa |
| Isotype: | IgG |
| Form: | Liquid |
| Purity: | ≥ 95% (SDS-PAGE) |

Datasheet

Version: 2.0.0
Revision date: 25 Mar 2025



| | |
|----------------------------|--|
| Purification: | Purified by immunogen affinity chromatography. |
| Storage: | Aliquot and store at -20°C. Avoid repeated freeze/thaw cycles. |
| Validity: | 12 months. |
| UniProt Primary AC: | Q9UKN8 (UniProt , ExPASy) |
| Gene Symbol: | GTF3C4 |
| GeneID: | 9329 |
| OMIM: | 604892 |
| HGNC: | 4667 |
| Ensembl: | ENSG00000125484 |
| String: | 9606.ENSP00000361219 |
| Molecular Weight: | Observed MW: 92 kDa |
| Buffer: | PBS, pH 7.3, with 0.02% sodium azide and 50% glycerol. |
| Concentration: | 2 mg/ml |
| Note: | THIS PRODUCT IS FOR RESEARCH USE ONLY. NOT FOR USE IN DIAGNOSTIC, THERAPEUTIC OR COSMETIC PROCEDURES. NOT FOR HUMAN OR ANIMAL CONSUMPTION. |

For Reference Only