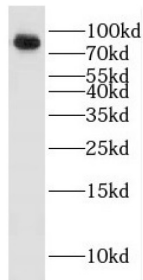


Probable E3 Ubiquitin-Protein Ligase HECTD2 (HECTD2) Antibody

Catalogue No.: abx233819



WB analysis of mouse brain tissue, using HECTD2 antibody (1/1000 dilution).

HECTD2 Antibody is a Rabbit Polyclonal against HECTD2.

Target:	Probable E3 Ubiquitin-Protein Ligase HECTD2 (HECTD2)
Clonality:	Polyclonal
Reactivity:	Human, Mouse
Tested Applications:	ELISA, WB
Host:	Rabbit
Recommended dilutions:	WB: 1/500 - 1/2000. Optimal dilutions/concentrations should be determined by the end user.
Conjugation:	Unconjugated
Immunogen:	HECT domain containing 2
Isotype:	IgG
Form:	Liquid
Purity:	≥ 95% (SDS-PAGE)
Purification:	Purified by immunogen affinity chromatography.
Storage:	Aliquot and store at -20°C. Avoid repeated freeze/thaw cycles.
Validity:	12 months.
UniProt Primary AC:	Q5U5R9 (UniProt , ExPASy)

Datasheet

Version: 2.0.0
Revision date: 25 Dec 2024



Gene Symbol: HECTD2

GeneID: [143279](#)

HGNC: 26736

KEGG: hsa:143279

Ensembl: ENSG00000165338

String: [9606.ENSP00000401023](#)

Molecular Weight: Observed MW: 88 kDa

Buffer: PBS, pH 7.3, with 0.02% sodium azide and 50% glycerol.

Concentration: 2 mg/ml

Note: This product is for research use only.

For Reference Only