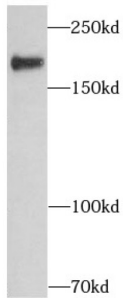
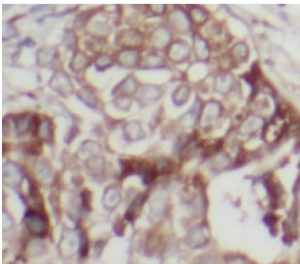


## HER2 / ErbB2 Antibody

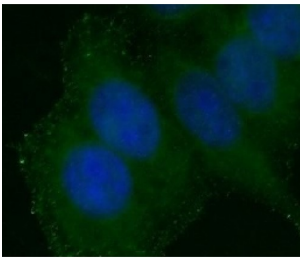
Catalogue No.: abx233834



WB analysis of HeLa cells, using ERBB2 antibody (1/300 dilution).



IHC-P analysis of human breast cancer tissue, using ERBB2 antibody (1/50 dilution).



IF analysis of HeLa cells, using ErbB2 antibody (1/50 dilution) and AF488-conjugated Goat Anti-Rabbit IgG (H+L).

HER2/ErbB2 Antibody is a Rabbit Polyclonal against HER2/ErbB2.

**Target:** HER2/ErbB2

**Clonality:** Polyclonal

**Reactivity:** Human

**Tested Applications:** ELISA, WB, IHC, IF/ICC

**Host:** Rabbit

**Recommended dilutions:** Optimal dilutions/concentrations should be determined by the end user.

**Conjugation:** Unconjugated

# Datasheet

Version: 2.0.0  
Revision date: 31 Jan 2025



<b>Immunogen:</b>	v-erb-b2 erythroblastic leukemia viral oncogene homolog 2, neuro/glioblastoma derived oncogene homolog (avian)
<b>Isotype:</b>	IgG
<b>Form:</b>	Liquid
<b>Purity:</b>	≥ 95% (SDS-PAGE)
<b>Purification:</b>	Purified by immunogen affinity chromatography.
<b>Storage:</b>	Aliquot and store at -20°C. Avoid repeated freeze/thaw cycles.
<b>Validity:</b>	12 months.
<b>UniProt Primary AC:</b>	P04626 ( <a href="#">UniProt</a> , <a href="#">ExPASy</a> )
<b>Gene Symbol:</b>	ERBB2
<b>KEGG:</b>	hsa:2064
<b>String:</b>	<a href="#">9606.ENSP00000269571</a>
<b>Molecular Weight:</b>	Observed MW: 185 kDa
<b>Buffer:</b>	PBS, pH 7.3, with 0.02% sodium azide and 50% glycerol.
<b>Concentration:</b>	2 mg/ml
<b>Note:</b>	This product is for research use only.

For Reference Only