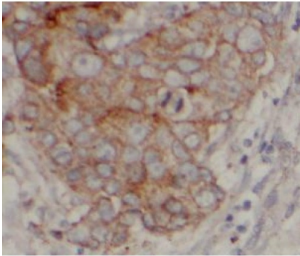


HER2 / ErbB2 Antibody

Catalogue No.: abx233835



IHC-P analysis of human breast cancer tissue, using ERBB2 antibody (1/1000 dilution).

HER2/ErbB2 Antibody is a Mouse Monoclonal against HER2/ErbB2.

Target:	HER2/ErbB2
Clonality:	Monoclonal
Reactivity:	Human
Tested Applications:	ELISA, IHC, FCM
Host:	Mouse
Recommended dilutions:	IHC: 1/500 - 1/3000. Optimal dilutions/concentrations should be determined by the end user.
Conjugation:	Unconjugated
Immunogen:	v-erb-b2 erythroblastic leukemia viral oncogene homolog 2, neuro/glioblastoma derived oncogene homolog(avian)
Isotype:	IgG _{2a}
Form:	Liquid
Purity:	≥ 95% (SDS-PAGE)
Purification:	Purified by Protein A and Protein G affinity chromatography.
Storage:	Aliquot and store at -20°C. Avoid repeated freeze/thaw cycles.
Validity:	12 months.
UniProt Primary AC:	P04626 (UniProt , ExPASy)

Datasheet

Version: 2.0.0

Revision date: 31 Jan 2025



Gene Symbol: ERBB2

KEGG: hsa:2064

String: [9606.ENSP00000269571](#)

Buffer: PBS, pH 7.3, with 0.02% sodium azide and 50% glycerol.

Concentration: 2 mg/ml

Note: This product is for research use only.

For Reference Only