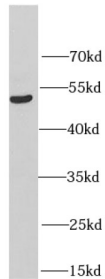
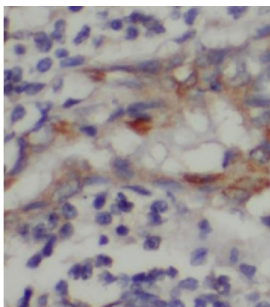


Homocysteine-Responsive Endoplasmic Reticulum-Resident Ubiquitin-Like Domain Member 1 Protein (HERPUD1) Antibody

Catalogue No.: abx233838



WB analysis of HepG2 cells, using HERPUD1 antibody (1/600 dilution).



IHC-P analysis of human lung cancer tissue, using HERPUD1 antibody (1/100 dilution).

HERP Antibody is a Rabbit Polyclonal against HERP.

Target:	Homocysteine-Responsive Endoplasmic Reticulum-Resident Ubiquitin-Like Domain Member 1 Protein (HERPUD1)
Clonality:	Polyclonal
Reactivity:	Human
Tested Applications:	ELISA, WB, IHC
Host:	Rabbit
Recommended dilutions:	WB: 1/500 - 1/1000, IHC: 1/20 - 1/200. Optimal dilutions/concentrations should be determined by the end user.
Conjugation:	Unconjugated
Immunogen:	homocysteine-inducible, endoplasmic reticulum stress-inducible, ubiquitin-like domain member 1
Isotype:	IgG
Form:	Liquid

Datasheet

Version: 2.0.0
Revision date: 04 Apr 2025



Purity:	≥ 95% (SDS-PAGE)
Purification:	Purified by immunogen affinity chromatography.
Storage:	Aliquot and store at -20°C. Avoid repeated freeze/thaw cycles.
Validity:	12 months.
UniProt Primary AC:	Q15011 (UniProt , ExPASy)
Gene Symbol:	HERPUD1
GeneID:	9709
OMIM:	608070
NCBI Accession:	NP_001010989.1, NM_001010989.2, NP_001259032.1, NM_001272103.1, NP_055500.1, NM_014685.3
KEGG:	hsa:9709
String:	9606.ENSP00000409555
Molecular Weight:	Observed MW: 52 kDa
Buffer:	PBS, pH 7.3, with 0.02% sodium azide and 50% glycerol.
Concentration:	2 mg/ml
Note:	THIS PRODUCT IS FOR RESEARCH USE ONLY. NOT FOR USE IN DIAGNOSTIC, THERAPEUTIC OR COSMETIC PROCEDURES. NOT FOR HUMAN OR ANIMAL CONSUMPTION.