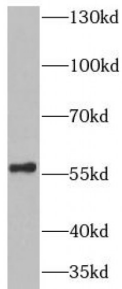
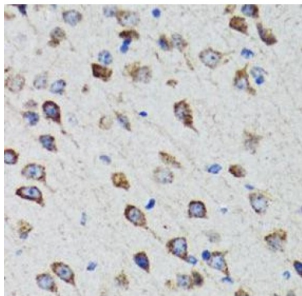


Beta-Hexosaminidase Subunit Alpha (HEXA) Antibody

Catalogue No.: abx233842



WB analysis of PC-3 cells, using HEXA antibody (1/1000 dilution).



IHC-P analysis of rat brain tissue, using HEXA antibody (1/100 dilution).

HEXA Antibody is a Rabbit Polyclonal against HEXA.

Target: Beta-Hexosaminidase Subunit Alpha (HEXA)**Clonality:** Polyclonal**Reactivity:** Human, Mouse, Rat**Tested Applications:** ELISA, WB, IHC**Host:** Rabbit**Recommended dilutions:** WB: 1/500 - 1/2000, IHC: 1/50 - 1/200. Optimal dilutions/concentrations should be determined by the end user.**Conjugation:** Unconjugated**Immunogen:** hexosaminidase A (alpha polypeptide)**Isotype:** IgG**Form:** Liquid**Purity:** ≥ 95% (SDS-PAGE)

Datasheet

Version: 2.0.0
Revision date: 15 Aug 2024



Purification:	Purified by immunogen affinity chromatography.
Storage:	Aliquot and store at -20°C. Avoid repeated freeze/thaw cycles.
Validity:	12 months.
UniProt Primary AC:	P06865 (UniProt , ExpASY)
KEGG:	hsa:3073
String:	9606.ENSP00000268097
Molecular Weight:	Observed MW: 60 kDa
Buffer:	PBS, pH 7.3, with 0.02% sodium azide and 50% glycerol.
Concentration:	2 mg/ml
Note:	This product is for research use only.

For Reference Only