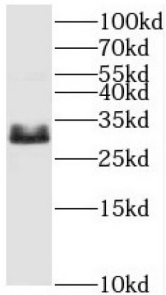
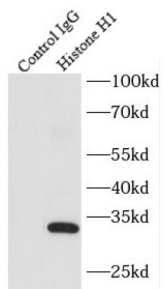


Histone H1 Antibody

Catalogue No.: abx233881



WB analysis of mouse thymus tissue, using histone H1 antibody (1/1000 dilution).



IP analysis of mouse kidney tissue lysate (4400 µg), using Histone H1 antibody (4 µg, detection: 1/500 dilution).

Histone H1 Antibody is a Rabbit Polyclonal against Histone H1.

Target:	Histone H1
Clonality:	Polyclonal
Reactivity:	Human, Mouse, Rat
Tested Applications:	ELISA, WB, IP
Host:	Rabbit
Recommended dilutions:	WB: 1/500 - 1/2000, IP: 1/200 - 1/2000. Optimal dilutions/concentrations should be determined by the end user.
Conjugation:	Unconjugated
Immunogen:	histone cluster 1, H1a
Isotype:	IgG
Form:	Liquid
Purity:	≥ 95% (SDS-PAGE)

Datasheet

Version: 4.0.0
Revision date: 01 Apr 2025



Purification:	Purified by immunogen affinity chromatography.
Storage:	Aliquot and store at -20°C. Avoid repeated freeze/thaw cycles.
Validity:	12 months.
UniProt Primary AC:	Q02539 (UniProt , ExPASy)
KEGG:	hsa:3024
String:	9606.ENSP00000244573
Molecular Weight:	Observed MW: 28 kDa, 30 kDa
Buffer:	PBS, pH 7.3, with 0.02% sodium azide and 50% glycerol.
Concentration:	2 mg/ml
Note:	THIS PRODUCT IS FOR RESEARCH USE ONLY. NOT FOR USE IN DIAGNOSTIC, THERAPEUTIC OR COSMETIC PROCEDURES. NOT FOR HUMAN OR ANIMAL CONSUMPTION.

For Reference Only