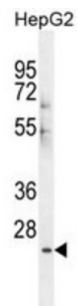
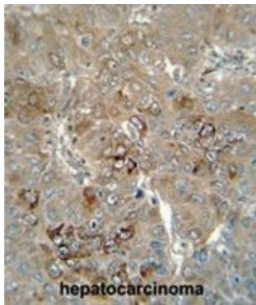


Putative Inactive Carboxylesterase 4 (CES4) Antibody

Catalogue No.: abx025864



Has no esterase activity (Probable).

Target:	Putative Inactive Carboxylesterase 4 (CES4)
Clonality:	Polyclonal
Reactivity:	Human
Tested Applications:	ELISA, WB, IHC
Host:	Rabbit
Recommended dilutions:	WB: 1/1000, IHC-P: 1/50 - 1/100. Not tested in IHC-F. Optimal dilutions/concentrations should be determined by the end user.
Conjugation:	Unconjugated
Immunogen:	KLH-conjugated synthetic peptide between 47-74 amino acids from the N-terminal region of human CES4.
Isotype:	IgG
Form:	Liquid
Purification:	Purified through a protein A column, followed by peptide affinity purification.

Datasheet

Version: 1.0.0
Revision date: 16 Nov 2024



Storage: Aliquot and store at -20°C. Avoid repeated freeze/thaw cycles.

UniProt Primary AC: Q9UKY3 ([UniProt](#), [ExPASy](#))

Gene Symbol: CES1P1

Molecular Weight: Calculated MW: 30.7 kDa

Buffer: PBS containing 0.09% sodium azide.

Note: This product is for research use only.

For Reference Only