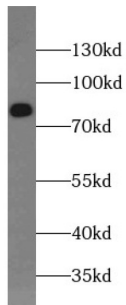
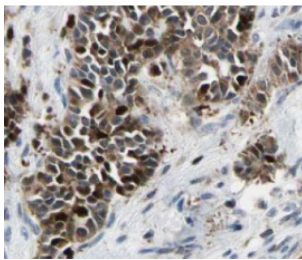


Heat Shock Factor Protein 1 (HSF1) Antibody

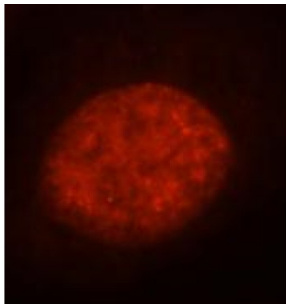
Catalogue No.: abx234036



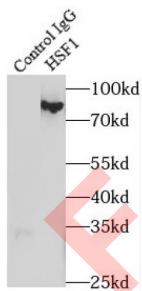
WB analysis of K-562 cells, using HSF1 antibody (1/1000 dilution).



IHC-P analysis of human cervical cancer tissue, using HSF1 Antibody (1/50 dilution).



IF analysis of A431 cells, using HSF1 antibody (1/50 dilution) and Rhodamine-Goat anti-Rabbit IgG.



IP analysis of Jurkat cell lysate (2400 µg), using HSF1 antibody (4 µg, detection: 1/1000 dilution).

HSF1 Antibody is a Rabbit Polyclonal against HSF1.

Target: Heat Shock Factor Protein 1 (HSF1)

Clonality: Polyclonal

Reactivity: Human, Mouse, Rat

Datasheet

Version: 3.0.0
Revision date: 30 Mar 2025



Tested Applications:	ELISA, WB, IHC, IF/ICC, IP
Host:	Rabbit
Recommended dilutions:	WB: 1/500 - 1/2400, IHC: 1/50 - 1/500, IF/ICC: 1/20 - 1/200, IP: 1/500 - 1/2000. Optimal dilutions/concentrations should be determined by the end user.
Conjugation:	Unconjugated
Immunogen:	heat shock transcription factor 1
Isotype:	IgG
Form:	Liquid
Purity:	≥ 95% (SDS-PAGE)
Purification:	Purified by immunogen affinity chromatography.
Storage:	Aliquot and store at -20°C. Avoid repeated freeze/thaw cycles.
Validity:	12 months.
UniProt Primary AC:	Q00613 (UniProt , ExpASY)
GeneID:	3297
NCBI Accession:	NP_005517.1
KEGG:	hsa:3297
String:	9606.ENSP00000431512
Molecular Weight:	Observed MW: 68-80 kDa
Buffer:	PBS, pH 7.3, with 0.02% sodium azide and 50% glycerol.
Concentration:	2 mg/ml
Note:	THIS PRODUCT IS FOR RESEARCH USE ONLY. NOT FOR USE IN DIAGNOSTIC, THERAPEUTIC OR COSMETIC PROCEDURES. NOT FOR HUMAN OR ANIMAL CONSUMPTION.