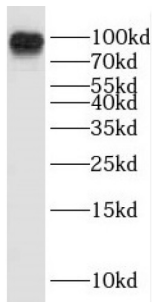
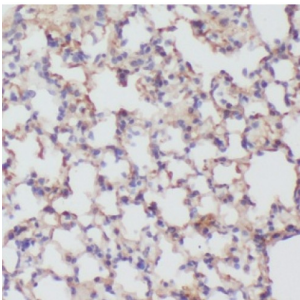


Intercellular Adhesion Molecule 1 (Icam-1) Antibody

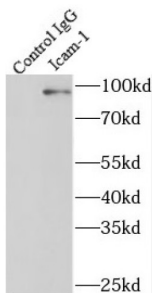
Catalogue No.: abx234102



WB analysis of rat heart tissue, using ICAM-1 antibody (1/800 dilution).



IHC-P analysis of mouse lung tissue, using ICAM-1 antibody (1/50 dilution).



IP analysis of Raji cell lysate (1320 µg), using ICAM-1 antibody (4 µg, detection: 1/1000 dilution).

Icam-1 Antibody is a Rabbit Polyclonal against Icam-1.

Target: Intercellular Adhesion Molecule 1 (Icam-1)

Clonality: Polyclonal

Reactivity: Mouse, Rat

Tested Applications: ELISA, WB, IHC, IF/ICC, IP

Host: Rabbit

Recommended dilutions: WB: 1/500 - 1/1000, IHC: 1/20 - 1/200, IF/ICC: 1/20 - 1/200, IP: 1/200 - 1/1000. Optimal dilutions/concentrations should be determined by the end user.

Conjugation: Unconjugated

Datasheet

Version: 2.0.0
Revision date: 09 Apr 2025



Immunogen:	intercellular adhesion molecule 1
Isotype:	IgG
Form:	Liquid
Purity:	≥ 95% (SDS-PAGE)
Purification:	Purified by immunogen affinity chromatography.
Storage:	Aliquot and store at -20°C. Avoid repeated freeze/thaw cycles.
Validity:	12 months.
UniProt Primary AC:	P05362 (UniProt , ExpASY)
Gene Symbol:	ICAM1
GeneID:	3383
OMIM:	147840
HGNC:	5344
KEGG:	hsa:3383
Ensembl:	ENSG00000090339
String:	9606.ENSP00000264832
Molecular Weight:	Observed MW: 85-95 kDa
Buffer:	PBS, pH 7.3, with 0.02% sodium azide and 50% glycerol.
Concentration:	2 mg/ml
Note:	THIS PRODUCT IS FOR RESEARCH USE ONLY. NOT FOR USE IN DIAGNOSTIC, THERAPEUTIC OR COSMETIC PROCEDURES. NOT FOR HUMAN OR ANIMAL CONSUMPTION.