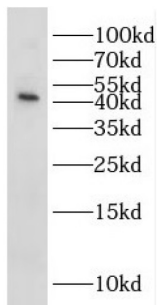


Interleukin 2 Receptor, Gamma (IL2RG) Antibody

Catalogue No.: abx234267



WB analysis of Jurkat cells, using IL2RG antibody (1/1500 dilution).

IL2RG Antibody is a Rabbit Polyclonal against IL2RG.

Target:	Interleukin 2 Receptor, Gamma (IL2RG)
Clonality:	Polyclonal
Reactivity:	Human, Mouse, Rat
Tested Applications:	ELISA, WB, FCM
Host:	Rabbit
Recommended dilutions:	WB: 1/500 - 1/2000. Optimal dilutions/concentrations should be determined by the end user.
Conjugation:	Unconjugated
Immunogen:	interleukin 2 receptor, gamma(severe combined immunodeficiency)
Isotype:	IgG
Form:	Liquid
Purity:	≥ 95% (SDS-PAGE)
Purification:	Purified by immunogen affinity chromatography.
Storage:	Aliquot and store at -20°C. Avoid repeated freeze/thaw cycles.
Validity:	12 months.
UniProt Primary AC:	P31785 (UniProt , ExpASY)

Datasheet

Version: 2.0.0
Revision date: 13 Mar 2025



KEGG: hsa:3561

String: [9606.ENSP00000363318](#)

Molecular Weight: Observed MW: 42 kDa

Buffer: PBS, pH 7.3, with 0.02% sodium azide and 50% glycerol.

Concentration: 2 mg/ml

Note: THIS PRODUCT IS FOR RESEARCH USE ONLY. NOT FOR USE IN DIAGNOSTIC, THERAPEUTIC OR COSMETIC PROCEDURES. NOT FOR HUMAN OR ANIMAL CONSUMPTION.

For Reference Only