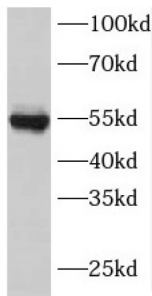
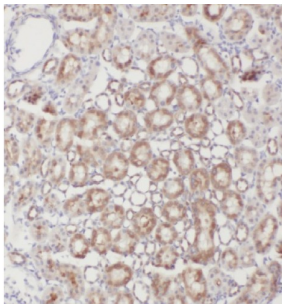


## Protein Inscuteable Homolog (INSC) Antibody

Catalogue No.: abx234332



WB analysis of mouse liver tissue, using INSC antibody (1/1000 dilution).



IHC-P analysis of human kidney tissue, using INSC antibody (1/50 dilution).

INSC Antibody is a Rabbit Polyclonal against INSC.

**Target:** Protein Inscuteable Homolog (INSC)**Clonality:** Polyclonal**Reactivity:** Human, Mouse, Rat**Tested Applications:** ELISA, WB, IHC, IF/ICC**Host:** Rabbit**Recommended dilutions:** WB: 1/500 - 1/2000, IHC: 1/20 - 1/200, IF/ICC: 1/20 - 1/200. Optimal dilutions/concentrations should be determined by the end user.**Conjugation:** Unconjugated**Immunogen:** inscuteable homolog (Drosophila)**Isotype:** IgG**Form:** Liquid**Purity:** ≥ 95% (SDS-PAGE)

# Datasheet

Version: 2.0.0  
Revision date: 31 Dec 2024



<b>Purification:</b>	Purified by immunogen affinity chromatography.
<b>Storage:</b>	Aliquot and store at -20°C. Avoid repeated freeze/thaw cycles.
<b>Validity:</b>	12 months.
<b>UniProt Primary AC:</b>	Q1MX18 ( <a href="#">UniProt</a> , <a href="#">ExPASy</a> )
<b>Gene Symbol:</b>	INSC
<b>GeneID:</b>	<a href="#">387755</a>
<b>OMIM:</b>	<a href="#">610668</a>
<b>HGNC:</b>	33116
<b>KEGG:</b>	hsa:387755
<b>Ensembl:</b>	ENSG00000188487
<b>String:</b>	<a href="#">9606.ENSP00000368872</a>
<b>Molecular Weight:</b>	Observed MW: 54 kDa
<b>Buffer:</b>	PBS, pH 7.3, with 0.02% sodium azide and 50% glycerol.
<b>Concentration:</b>	2 mg/ml
<b>Note:</b>	This product is for research use only.

For Reference Only