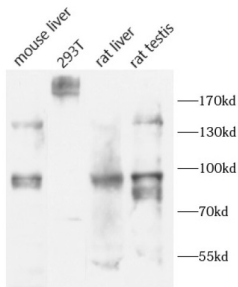
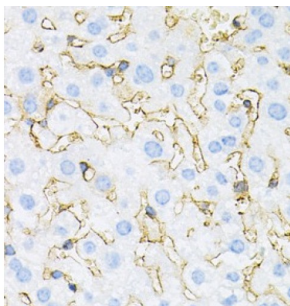


Insulin Receptor (INSR) Antibody

Catalogue No.: abx234336



WB analysis of various lysates, using INSR antibody (1/1000 dilution).



IHC-P analysis of mouse liver tissue, using INSR antibody (1/50 dilution).

INSR Antibody is a Rabbit Polyclonal against INSR.

Target: Insulin Receptor (INSR)

Clonality: Polyclonal

Reactivity: Human, Mouse, Rat

Tested Applications: ELISA, WB, IHC

Host: Rabbit

Recommended dilutions: WB: 1/500 - 1/2000, IHC: 1/50 - 1/200. Optimal dilutions/concentrations should be determined by the end user.

Conjugation: Unconjugated

Immunogen: insulin receptor

Isotype: IgG

Form: Liquid

Purity: ≥ 95% (SDS-PAGE)

Datasheet

Version: 2.0.0
Revision date: 14 Dec 2024



Purification:	Purified by immunogen affinity chromatography.
Storage:	Aliquot and store at -20°C. Avoid repeated freeze/thaw cycles.
Validity:	12 months.
UniProt Primary AC:	P06213 (UniProt , ExpASY)
Gene Symbol:	INSR
GeneID:	3643
OMIM:	125853
HGNC:	6091
KEGG:	hsa:3643
String:	9606.ENSP00000303830
Molecular Weight:	Observed MW: 135 kDa, 95 kDa, 190 kDa
Buffer:	PBS, pH 7.3, with 0.02% sodium azide and 50% glycerol.
Concentration:	2 mg/ml
Note:	This product is for research use only.

For Reference Only