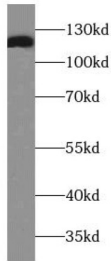
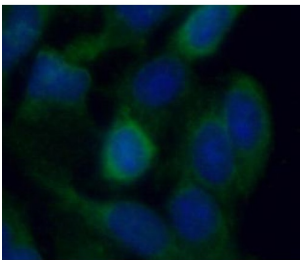


Integrin alpha-3 Antibody

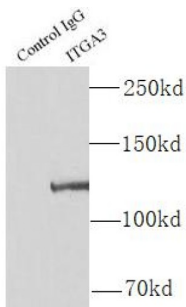
Catalogue No.: abx234344



WB analysis of PC-3 cells, using ITGA3 antibody (1/500 dilution).



IF analysis of A549 cells, using ITGA3 antibody (1/50 dilution) and AF488-conjugated Goat Anti-Rabbit IgG (H+L).



IP analysis of PC-3 cell lysate (2000 µg), using ITGA3 antibody (4 µg, detection: 1/500 dilution).

Integrin alpha-3 Antibody is a Rabbit Polyclonal against Integrin alpha-3.

Target: Integrin alpha-3

Clonality: Polyclonal

Reactivity: Human, Mouse, Rat

Tested Applications: ELISA, WB, IF/ICC, IP

Host: Rabbit

Recommended dilutions: WB: 1/500 - 1/1000, IF/ICC: 1/20 - 1/200, IP: 1/500 - 1/1000. Optimal dilutions/concentrations should be determined by the end user.

Conjugation: Unconjugated

Datasheet

Version: 1.0.0
Revision date: 28 Dec 2024



Immunogen:	integrin, alpha 3
Isotype:	IgG
Form:	Liquid
Purity:	≥ 95% (SDS-PAGE)
Purification:	Purified by immunogen affinity chromatography.
Storage:	Aliquot and store at -20°C. Avoid repeated freeze/thaw cycles.
Validity:	12 months.
UniProt Primary AC:	P26006 (UniProt , ExpASY)
Gene Symbol:	ITGA3
GeneID:	3675
OMIM:	605025
HGNC:	6139
KEGG:	hsa:3675
Ensembl:	ENSG00000005884
String:	9606.ENSP00000007722
Molecular Weight:	Observed MW: 120 kDa
Buffer:	PBS, pH 7.3, with 0.02% sodium azide and 50% glycerol.
Concentration:	2 mg/ml
Note:	This product is for research use only.