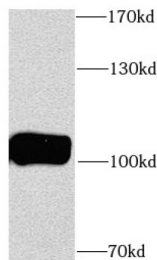
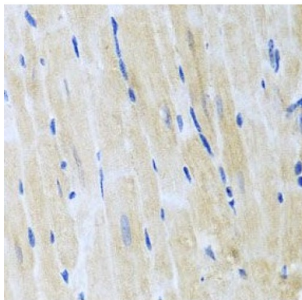


## Inositol-Trisphosphate 3-Kinase B (ITPKB) Antibody

Catalogue No.: abx234423



WB analysis of mouse brain tissue, using ITPKB antibody (1/1000 dilution).



IHC-P analysis of mouse heart tissue, using ITPKB Antibody (1/50 dilution).

ITPKB Antibody is a Rabbit Polyclonal against ITPKB.

**Target:** Inositol-Trisphosphate 3-Kinase B (ITPKB)**Clonality:** Polyclonal**Reactivity:** Human, Mouse, Rat**Tested Applications:** ELISA, WB, IHC**Host:** Rabbit**Recommended dilutions:** WB: 1/200 - 1/2000, IHC: 1/20 - 1/200. Optimal dilutions/concentrations should be determined by the end user.**Conjugation:** Unconjugated**Immunogen:** inositol 1, 4, 5-trisphosphate 3-kinase B**Isotype:** IgG**Form:** Liquid**Purity:** ≥ 95% (SDS-PAGE)

# Datasheet

Version: 3.0.0  
Revision date: 14 Apr 2025



<b>Purification:</b>	Purified by immunogen affinity chromatography.
<b>Storage:</b>	Aliquot and store at -20°C. Avoid repeated freeze/thaw cycles.
<b>Validity:</b>	12 months.
<b>UniProt Primary AC:</b>	P27987 ( <a href="#">UniProt</a> , <a href="#">ExpASY</a> )
<b>KEGG:</b>	hsa:3707
<b>String:</b>	<a href="#">9606.ENSP00000411152</a>
<b>Molecular Weight:</b>	Observed MW: 102 kDa
<b>Buffer:</b>	PBS, pH 7.3, with 0.02% sodium azide and 50% glycerol.
<b>Concentration:</b>	2 mg/ml
<b>Note:</b>	THIS PRODUCT IS FOR RESEARCH USE ONLY. NOT FOR USE IN DIAGNOSTIC, THERAPEUTIC OR COSMETIC PROCEDURES. NOT FOR HUMAN OR ANIMAL CONSUMPTION.

For Reference Only