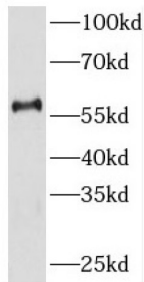


Killer Cell Immunoglobulin Like Receptor 2DL3 (KIR2DL3) Antibody

Catalogue No.: abx234581



WB analysis of human liver tissue, using KIR2DL3 antibody (1/500 dilution).

KIR2DL3 Antibody is a Rabbit Polyclonal against KIR2DL3.

Target:	Killer Cell Immunoglobulin Like Receptor 2DL3 (KIR2DL3)
Clonality:	Polyclonal
Reactivity:	Human
Tested Applications:	ELISA, WB
Host:	Rabbit
Recommended dilutions:	WB: 1/500 - 1/2000. Optimal dilutions/concentrations should be determined by the end user.
Conjugation:	Unconjugated
Immunogen:	killer cell immunoglobulin-like receptor, two domains, long cytoplasmic tail, 3
Isotype:	IgG
Form:	Liquid
Purity:	≥ 95% (SDS-PAGE)
Purification:	Purified by immunogen affinity chromatography.
Storage:	Aliquot and store at -20°C. Avoid repeated freeze/thaw cycles.
Validity:	12 months.
UniProt Primary AC:	P43628 (UniProt , ExpASY)

Datasheet

Version: 3.0.0
Revision date: 12 Mar 2025



Gene Symbol: KIR2DL3

GeneID: [3804](#)

OMIM: [604938](#)

HGNC: 6331

KEGG: hsa:3804

Ensembl: ENSG00000243772

String: [9606.ENSP00000342215](#)

Molecular Weight: Observed MW: 58 kDa

Buffer: PBS, pH 7.3, with 0.02% sodium azide and 50% glycerol.

Concentration: 2 mg/ml

Note: THIS PRODUCT IS FOR RESEARCH USE ONLY. NOT FOR USE IN DIAGNOSTIC, THERAPEUTIC OR COSMETIC PROCEDURES. NOT FOR HUMAN OR ANIMAL CONSUMPTION.

For Reference Only