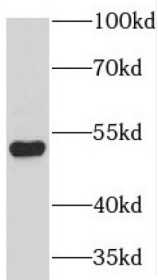
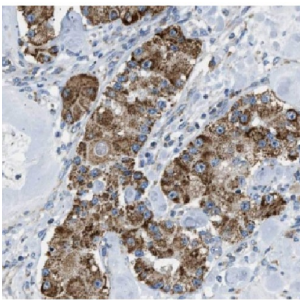


Keratin 80 (KRT80) Antibody

Catalogue No.: abx234657



WB analysis of NIH/3T3 cells, using KRT80 antibody (1/1500 dilution).



IHC-P analysis of human testis tissue, using KRT80 antibody (1/200 dilution).

KRT80 Antibody is a Rabbit Polyclonal against KRT80.

Target:	Keratin 80 (KRT80)
Clonality:	Polyclonal
Reactivity:	Human, Mouse, Rat
Tested Applications:	ELISA, WB, IHC
Host:	Rabbit
Recommended dilutions:	WB: 1/500 - 1/2000, IHC: 1/20 - 1/200. Optimal dilutions/concentrations should be determined by the end user.
Conjugation:	Unconjugated
Immunogen:	keratin 80
Isotype:	IgG
Form:	Liquid
Purity:	≥ 95% (SDS-PAGE)

Datasheet

Version: 2.0.0
Revision date: 23 Feb 2025



Purification:	Purified by immunogen affinity chromatography.
Storage:	Aliquot and store at -20°C. Avoid repeated freeze/thaw cycles.
Validity:	12 months.
UniProt Primary AC:	Q6KB66 (UniProt , ExPASy)
Gene Symbol:	KRT80
GeneID:	144501
OMIM:	611161
HGNC:	27056
KEGG:	hsa:144501
Ensembl:	ENSG00000167767
String:	9606.ENSP00000378292
Molecular Weight:	Observed MW: 47 kDa, 50 kDa
Buffer:	PBS, pH 7.3, with 0.02% sodium azide and 50% glycerol.
Concentration:	2 mg/ml
Note:	This product is for research use only.

For Reference Only