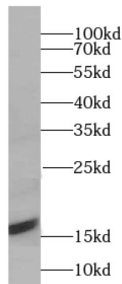


LC3A-Specific Antibody

Catalogue No.: abx234719



WB analysis of mouse brain tissue, using LC3A-Specific antibody (1/1500 dilution).

LC3A-Specific Antibody is a Rabbit Polyclonal against LC3A-Specific.

Target:	LC3A-Specific
Clonality:	Polyclonal
Reactivity:	Human, Mouse, Rat
Tested Applications:	ELISA, WB, IF/ICC, FCM
Host:	Rabbit
Recommended dilutions:	WB: 1/1000 - 1/4000, IF/ICC: 1/10 - 1/100. Optimal dilutions/concentrations should be determined by the end user.
Conjugation:	Unconjugated
Immunogen:	microtubule-associated protein 1 light chain 3 alpha
Isotype:	IgG
Form:	Liquid
Purity:	≥ 95% (SDS-PAGE)
Purification:	Purified by immunogen affinity chromatography.
Storage:	Aliquot and store at -20°C. Avoid repeated freeze/thaw cycles.
Validity:	12 months.
UniProt Primary AC:	Q9H492 (UniProt , ExPASy)

Datasheet

Version: 1.0.0
Revision date: 16 Feb 2025



GeneID: [84557](#)

NCBI Accession: NP_115903.1

String: [9606.ENSP00000363970](#)

Molecular Weight: Observed MW: 16 kDa

Buffer: PBS, pH 7.3, with 0.02% sodium azide and 50% glycerol.

Concentration: 2 mg/ml

Note: This product is for research use only.

For Reference Only