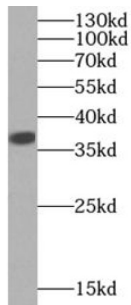
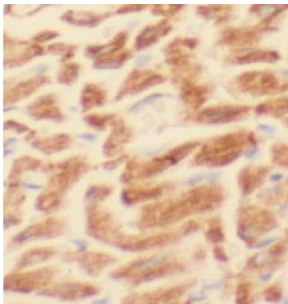


LDHA-Specific Antibody

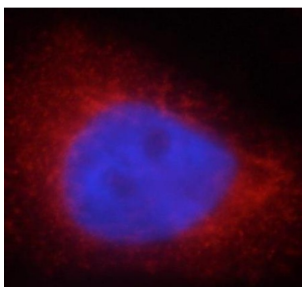
Catalogue No.: abx234737



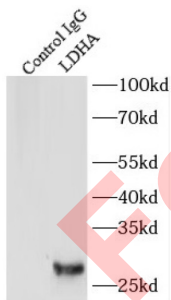
WB analysis of A431 cells, using LDHA-Specific antibody (1/2000 dilution).



IHC-P analysis of human heart tissue, using LDHA-Specific antibody (1/100 dilution).



IF analysis of HeLa cells, using LDHA-Specific antibody (1/25 dilution) and Rhodamine-conjugated goat anti-rabbit IgG (red).



IP analysis of mouse kidney tissue lysate (4000 µg), using LDHA-Specific antibody (4 µg, detection: 1/2000 dilution).

LDHA-Specific Antibody is a Rabbit Polyclonal against LDHA-Specific.

Target: LDHA-Specific

Clonality: Polyclonal

Reactivity: Human, Mouse, Rat

Datasheet

Version: 1.0.0
Revision date: 31 Jan 2025



Tested Applications:	ELISA, WB, IHC, IF/ICC, FCM, IP
Host:	Rabbit
Recommended dilutions:	WB: 1/1000 - 1/4000, IHC: 1/20 - 1/200, IF/ICC: 1/20 - 1/200, IP: 1/1000 - 1/4000. Optimal dilutions/concentrations should be determined by the end user.
Conjugation:	Unconjugated
Immunogen:	lactate dehydrogenase A
Isotype:	IgG
Form:	Liquid
Purity:	≥ 95% (SDS-PAGE)
Purification:	Purified by immunogen affinity chromatography.
Storage:	Aliquot and store at -20°C. Avoid repeated freeze/thaw cycles.
Validity:	12 months.
UniProt Primary AC:	P00338 (UniProt , ExPASy)
Gene Symbol:	LDHA
KEGG:	hsa:3939
String:	9606.ENSP00000445175
Molecular Weight:	Observed MW: 37 kDa
Buffer:	PBS, pH 7.3, with 0.02% sodium azide and 50% glycerol.
Concentration:	2 mg/ml
Note:	This product is for research use only.