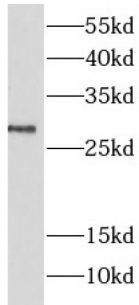
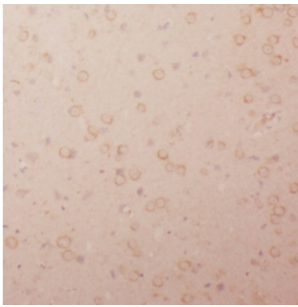


Protein Lin-7 Homolog A (LIN7A) Antibody

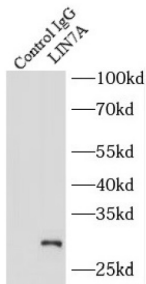
Catalogue No.: abx234788



WB analysis of rat brain tissue, using LIN7A antibody (1/1000 dilution).



IHC-P analysis of mouse brain tissue, using LIN7A Antibody (1/50 dilution).



IP analysis of mouse brain tissue lysate (4000 µg), using LIN7A antibody (3 µg, detection: 1/1000 dilution).

LIN7A Antibody is a Rabbit Polyclonal against LIN7A.

Target: Protein Lin-7 Homolog A (LIN7A)

Clonality: Polyclonal

Reactivity: Human, Mouse, Rat

Tested Applications: ELISA, WB, IHC, IP

Host: Rabbit

Recommended dilutions: WB: 1/500 - 1/2000, IHC: 1/20 - 1/200, IP: 1/200 - 1/1000. Optimal dilutions/concentrations should be determined by the end user.

Conjugation: Unconjugated

Datasheet

Version: 4.0.0
Revision date: 31 Dec 2024



Immunogen:	lin-7 homolog A (C. elegans)
Isotype:	IgG
Form:	Liquid
Purity:	≥ 95% (SDS-PAGE)
Purification:	Purified by immunogen affinity chromatography.
Storage:	Aliquot and store at -20°C. Avoid repeated freeze/thaw cycles.
Validity:	12 months.
UniProt Primary AC:	O14910 (UniProt , ExPASy)
Gene Symbol:	LIN7A
GeneID:	8825
OMIM:	603380
HGNC:	17787
KEGG:	hsa:8825
Ensembl:	ENSG00000111052
String:	9606.ENSP00000447488
Molecular Weight:	Observed MW: 28-30 kDa
Buffer:	PBS, pH 7.3, with 0.02% sodium azide and 50% glycerol.
Concentration:	2 mg/ml
Note:	This product is for research use only.