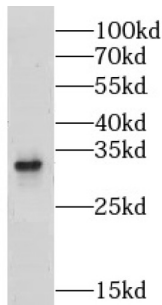


Leucine Rich Repeat Containing Protein 10 (LRRC10) Antibody

Catalogue No.: abx234853



WB analysis of mouse brain tissue, using LRRC10 antibody (1/300 dilution).

LRRC10 Antibody is a Rabbit Polyclonal against LRRC10.

Target:	Leucine Rich Repeat Containing Protein 10 (LRRC10)
Clonality:	Polyclonal
Reactivity:	Human, Mouse, Rat
Tested Applications:	ELISA, WB
Host:	Rabbit
Recommended dilutions:	WB: 1/500 - 1/2000. Optimal dilutions/concentrations should be determined by the end user.
Conjugation:	Unconjugated
Immunogen:	leucine rich repeat containing 10
Isotype:	IgG
Form:	Liquid
Purity:	≥ 95% (SDS-PAGE)
Purification:	Purified by immunogen affinity chromatography.
Storage:	Aliquot and store at -20°C. Avoid repeated freeze/thaw cycles.
Validity:	12 months.
UniProt Primary AC:	Q5BK Y1 (UniProt , ExPASy)

Datasheet

Version: 2.0.0
Revision date: 10 Mar 2025



Gene Symbol: LRRC10

GeneID: [376132](#)

OMIM: [610846](#)

HGNC: 20264

KEGG: hsa:376132

Ensembl: ENSG00000198812

String: [9606.ENSP00000355166](#)

Molecular Weight: Observed MW: 32 kDa

Buffer: PBS, pH 7.3, with 0.02% sodium azide and 50% glycerol.

Concentration: 2 mg/ml

Note: THIS PRODUCT IS FOR RESEARCH USE ONLY. NOT FOR USE IN DIAGNOSTIC, THERAPEUTIC OR COSMETIC PROCEDURES. NOT FOR HUMAN OR ANIMAL CONSUMPTION.

For Reference Only